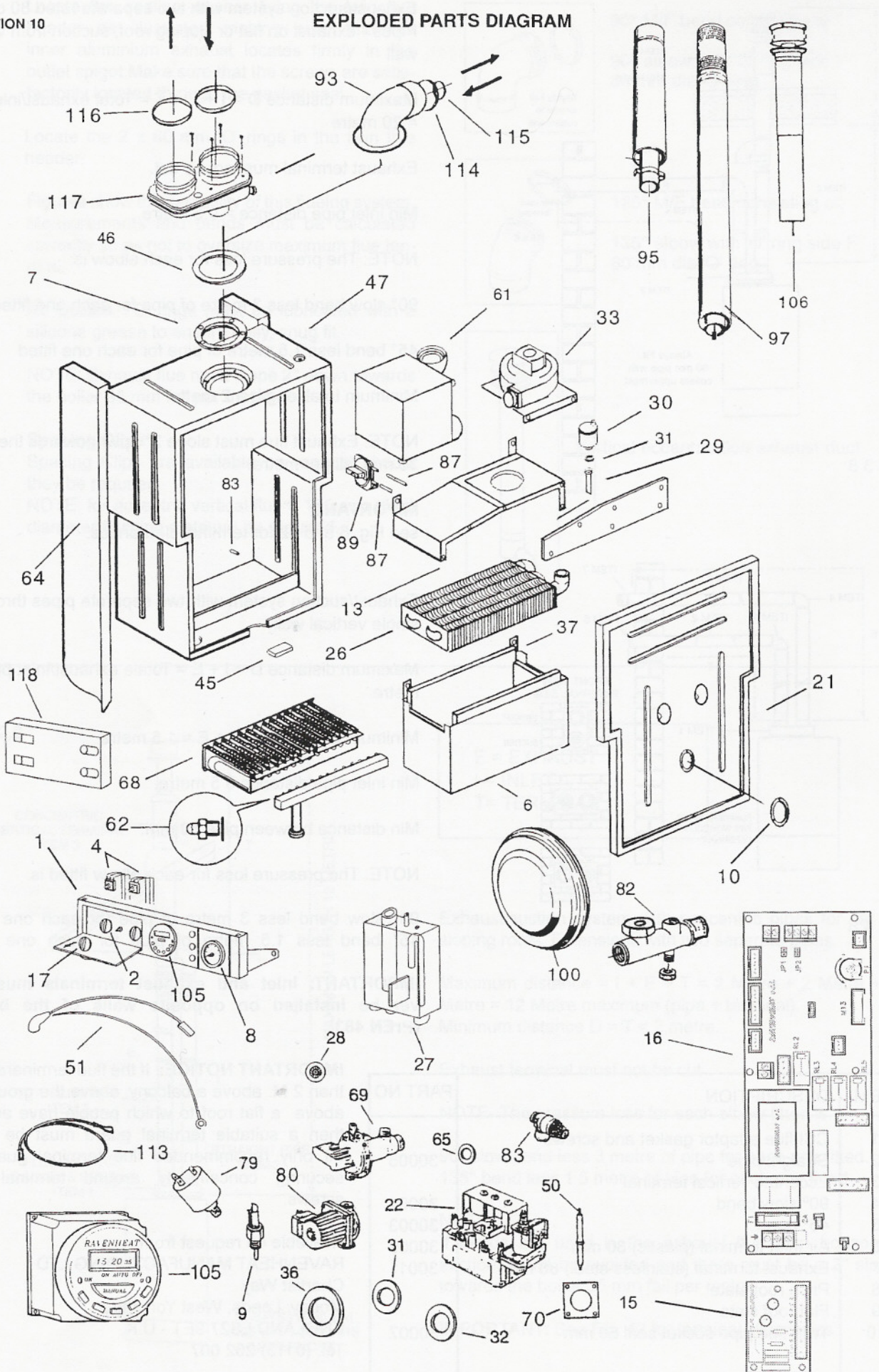


EXPLODED PARTS DIAGRAM



RAVENHEAT CSI 85 - CSI 85 CONDENSING FANNED COMBI BOILER

SHORT LIST OF SPARE PARTS

Pos.	Ravenheat Part. No.	G.C. Part. No.	Description
1	0014FR006005/2		Instrument panel - TIMER MODEL
2	0012COM06005/0	E23-712	Main switch
4	0012POT05010/0	E23-729	D.H.W. / C.H. Potentiometer
5	0007TER08010/0		Overheat thermostat
6	0001CAM06005/0	E23-732	Combustion chamber
7	0001DIA06005/0	E23-730	Flue restriction ring 79CSI (F2)
8	5027055	372842	Water gauge
9	0007TER05010/0	E23-715	D.H.W. Sensor
9.1	0007TER05006/0		CH Sensor
10	0014SPI09005/0		Sight glass
11	0010TUB05041/0		Depression chamber gas pipe
13	0001CAP06005/0	E23-733	Flue gas exhaust hood
15	0012CIR06010/0		Fan Control Board
16	0012CIR05010/2		Printed ignition control board
17	0014MAN06015/0	E23-718	Knob
21	0001COP01010/0		Combustion chamber cover
22	0008VAL09015/0		Dungs valve gas
26	0002SCA06010/0	E23-731	Heat exchanger
27	0014RAC06005/0	E23-735	Condensing trap
28	0014REGO1005/0	371271	Water flow regulator
29	0010TUB06050/1		Connecting pipe to air purge
30	0008VAL01011/0		Air purge valve
31	5018025	372851	Gasket 18.5 x 11.6 x 2
32	5018030	372867	Gasket 24 x 15 x 2
33	0012VEN03005/1		Fan
36	5018046	378864	Gasket 30 x 22 x 2
37	1015PAN06005/0	E23-737	Insulation pads set
39	0012FUS05015/0	E23-720	Internal fuse 2A
46	0014GUA01020/0	371277	Flue gasket

Pos.	Ravenheat Part. No.	G.C. Part. No.	Description
47	0001CAM06010/0		Depression chamber
50	0012CAN09005/2		Ignition-sensing electrode
51	0012CAV08020/0		Cable for spark-sensing electrode
61	0002SCA06006/0		Condensing heat exchanger
62	0003UGE03005/0	371297	Nozzle Ø 1,25 for natural gas
62.1	0003UGE01011 /0	E23-755	Nozzle DM 0.75 LPG
64	0001TEL08005/0		Frame
65	5018046	372864	Seal
67	0010TUB06020/1		Connecting pipe D.H.W. outlet
24	0003BRU06016/0		Burner natural gas
24.1	0003BRU06017/0		Burner LPG
69	0008VAL06010/0	372-895	3-way valve
70	0013GUA03035/0	371273	Gasket 32 x 32 x 2 gas valve
79	0005PRE05010/0	371310	Low water pressure switch
80	0009CIR01011/1		Circulation pump
82	0011COL01005/2		Brass manifold
83	0008VAL01018/1		Safety relief valve (3 bar)
87	5021312	372875	Nylon tubes from pressure switch
89	0005PRE06006/0		Pressure switch
93	0019CUR06005/1		Elbow header
95	0019PR005005/0		Flue extension duct complete
97	0019TER06005/1		Flue duct and terminal complete
100	0004VAS06010/0		Expansion tank
105	TM6192	371258	Digital Timer
106	0019TER06010/0	E23-753	Vertical Flue Terminal Complete
110	0001MAN05005/1		Bottom panel
112	0011RIV06007/0		Condensate blockage
113	0012CAV06015/0		Earth wire
114	0014GUA06010/0		Flue gasket dm 100
115	0014GUA06005/0		Flue gasket dm 60
116	0014GUA06015/0		Flue gasket dm 80
117	0019SDO06005/0		Twin header
118	0002SCA06015/1		Heat exchanger for D.H.W. water
02	5012051	371257	Diaphragm for 3-way valve
05	5012052	372899	Microswitch for 3-way valve