



# SIGMA

CAST IRON DOMESTIC GAS-FIRED BOILERS

ADVANCED  
HEATING  
FOR THE  
MILLENNIUM

20000

**FÉRROLI**





**FERROLI**

**SIGMA**



## AN ADVANCED CAST IRON BOILER FOR THE MODERN HOME

*Combining the latest technology with the traditional benefits of a cast iron boiler*



Designed and built by a company with unrivalled experience in developing and manufacturing cast iron boilers for nearly half a century, Férroli's advanced Sigma range brings together all the traditional benefits of a cast iron boiler with the very latest developments in heating technology.

Which means all the quality, reliability and long life associated with cast iron products combined with the latest in lightweight heat exchanger design and up-to-the-minute burner technology, bringing high efficiency, economy and lower gas bills.

Add electronic ignition, and you have a domestic boiler that is simple to use, highly effective in operation, responsive to your requirements and above all totally reliable and economical in use.



## MAJOR BENEFITS

- The complete range. There's a Sigma model to suit every domestic heating requirement with range rated outputs from 30,000 to 60,000 Btu/h.
- Sets new standards in cast iron boiler design. Sigma is one of the smallest and lightest cast iron boilers on the market. Casing only 600mm high, 400mm wide and 220mm deep. Weight of larger models only 35Kg.
- Simple to handle and install, ideal replacement for old balanced flue boilers.
- Lightweight cast iron heat exchanger engineered for long life and absolute reliability. Férroli's worldwide reputation for heat transfer technology speaks for itself.
- Rear fanned-flue for maximum siting flexibility. Can easily be fitted out of sight inside a standard kitchen cupboard.
- Wealth of flue options. Sigma can be sited virtually anywhere in a home.



A Sigma 30 installed inside a kitchen cupboard.



### A RANGE WITH A MODEL TO SUIT EVERY HOME

Gone are the days when a cast iron boiler was considered outmoded because of its size and weight. Férroli's Sigma is small, unobtrusive and lightweight, and with a wide range of models to choose from, there's a Sigma to meet the central heating requirements of virtually every type of property, from a small flat or maisonette to a five bedroomed house.

With range rated outputs up to 30,000, 40,000, 50,000 and 60,000 Btu/h available immediately and larger output models up to 120,000 Btu/h coming on stream soon - Sigma offers the discerning specifier the complete range.

### THE LATEST TECHNOLOGY

Both the heat exchanger and stainless steel burner are the result of considerable design and development



Férroli's fully automated foundry.

by Férroli, an acknowledged world leader in the field of heat transfer technology. They are unique to Sigma. Sigma's state-of-the-art heat exchanger has a low water content, which means a faster response to your central heating requirements. Its compact size and light weight bring important advantages for the installer in terms of making on-site handling and installation far easier, while the end user benefits from a boiler that is neat and compact and will blend comfortably with any surroundings.

### ELECTRONIC IGNITION

All Sigma boilers feature electronic ignition. This means that there are no standing pilot lights to go out and a reduction in overall consumption of gas.

### REAR FANNED-FLUE FOR SITING FLEXIBILITY

Sigma is a room sealed boiler with a rear fanned-flue. This makes it an ideal replacement for ageing balanced and conventional flue appliances. As it draws air from outside for combustion, it can, for example, be installed out of sight in an unvented cupboard. It also offers a multi-directional top flue outlet facility which enables the flue to be taken from the right or left of the boiler. It can also be flued vertically. In fact, Sigma can be installed virtually anywhere in a property.



## ABSOLUTE SAFETY IN USE

Sigma is fitted with a differential air pressure switch which ensures that the burner only ignites when the fan is functioning correctly. All key components - the heat exchanger, combustion chamber, burner, fan and air pressure switch - are contained within a galvanised sealed compartment which protects them and ensures long life and reliability. The whole combustion process is effectively sealed off ensuring that there is absolutely no possibility of flue gases ever entering the home.



As with all Ferröli products, Sigma is CE approved and complies with all the latest European standards and has IP44 electrical protection.

## CONTROLS

Sigma is compatible with all proprietary manufacturers' controls from a simple on/off time clock to sophisticated controls such as Ferröli's Chronotherm electronic programmer.



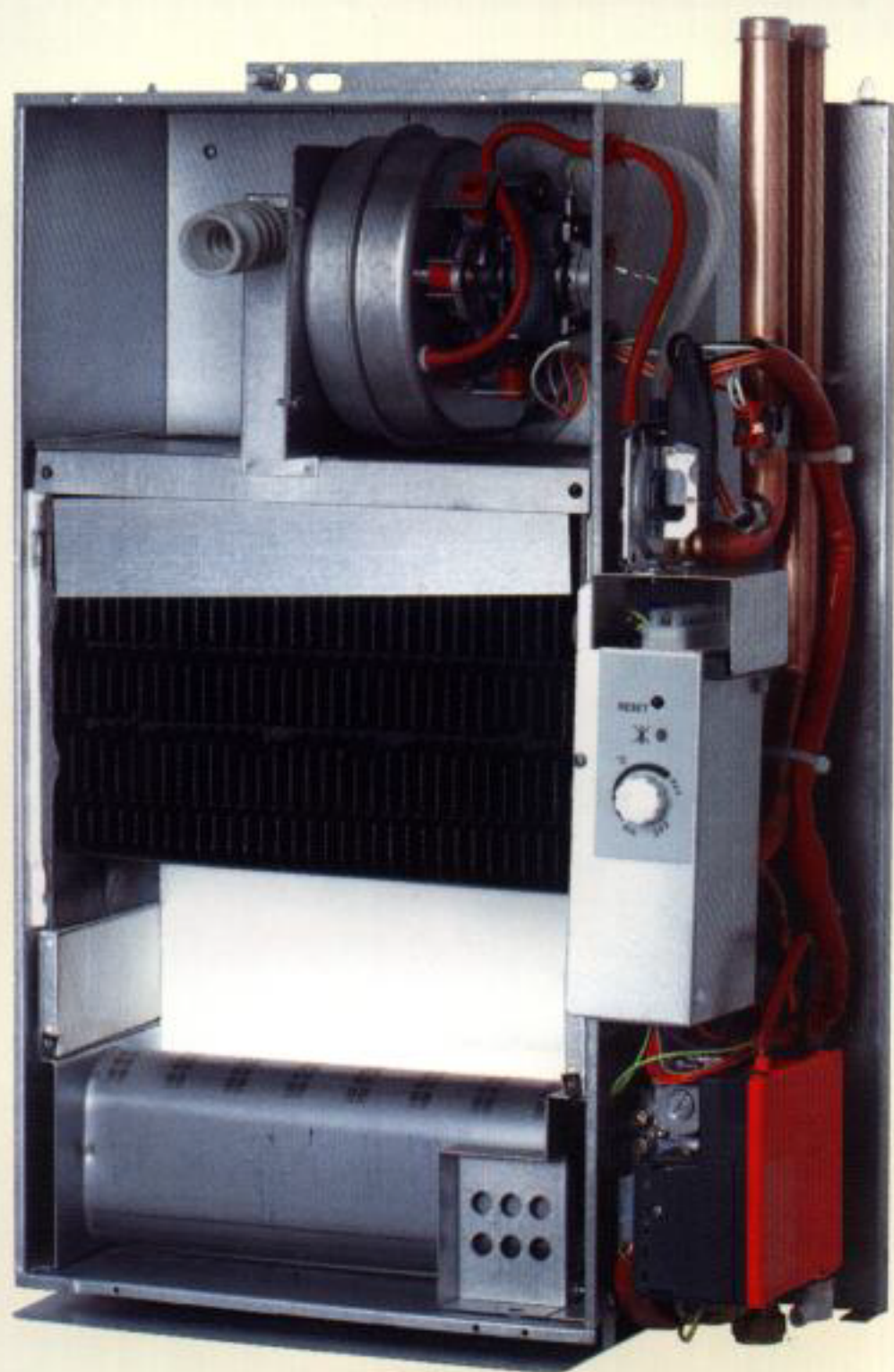
## SERVICING

All servicing can be carried out conveniently from the front of the boiler. There is ready availability of components from parts stockists throughout the U.K.

## GUARANTEES

All Ferröli boilers are fully guaranteed for the industry standard one year.

## SIGMA AT A GLANCE



1. Innovative lightweight cast iron monobloc heat exchanger
2. Ferröli's stainless steel gas burner - unique to Sigma
3. Concealed rear fanned-flue as standard. Side and vertical flue options available
4. Standard 4m flue. Two pipe systems allow flue lengths up to 40m (see back page)

## EXTENDED SERVICE CONTRACTS

Once the normal guarantee period has expired, you can extend coverage cost effectively, with a choice of Ferröli Service contracts to suit your budget. For a brochure call us on **0121 352 3200**.



## SECURITY ON SITE

All Ferröli boilers can be supplied with a range of security devices to prevent theft on site, including electronic tagging.

## AWARDS

Ferröli has won many major awards for product design over the years. Most recently the company was awarded *the Institute of Domestic Heating and Environmental Engineers International Award of Excellence for 1998* for its Domina gas-fired domestic combination boiler. The company also won *the 1994 H&V News 'Domestic Product' of the Year* for its highly innovative Xignal gas-fired domestic combination boiler.

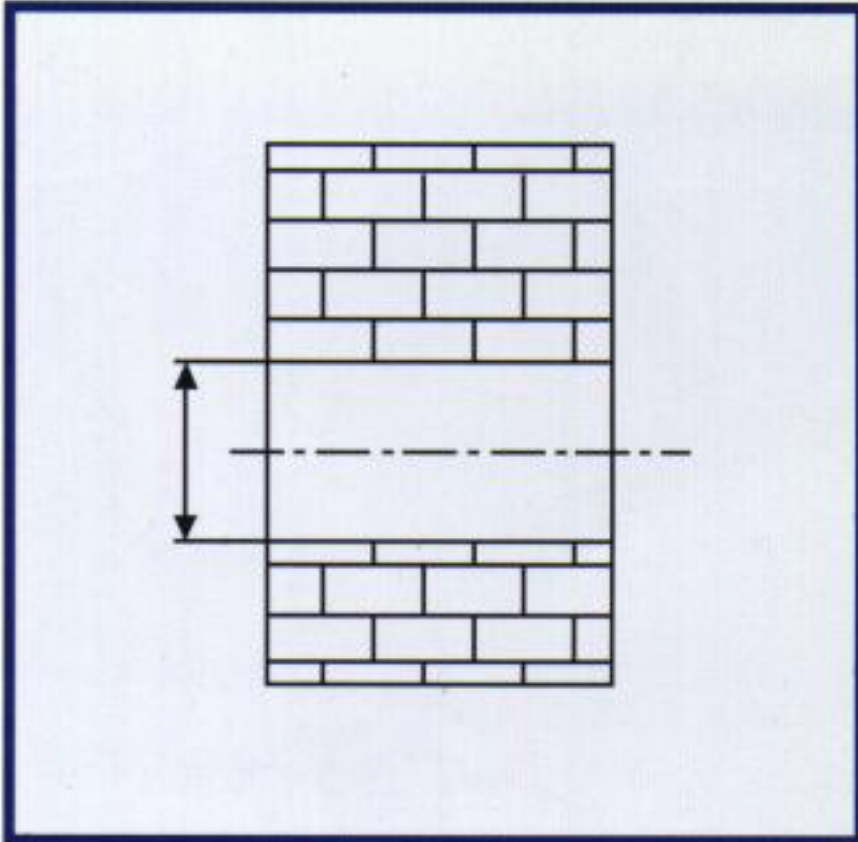




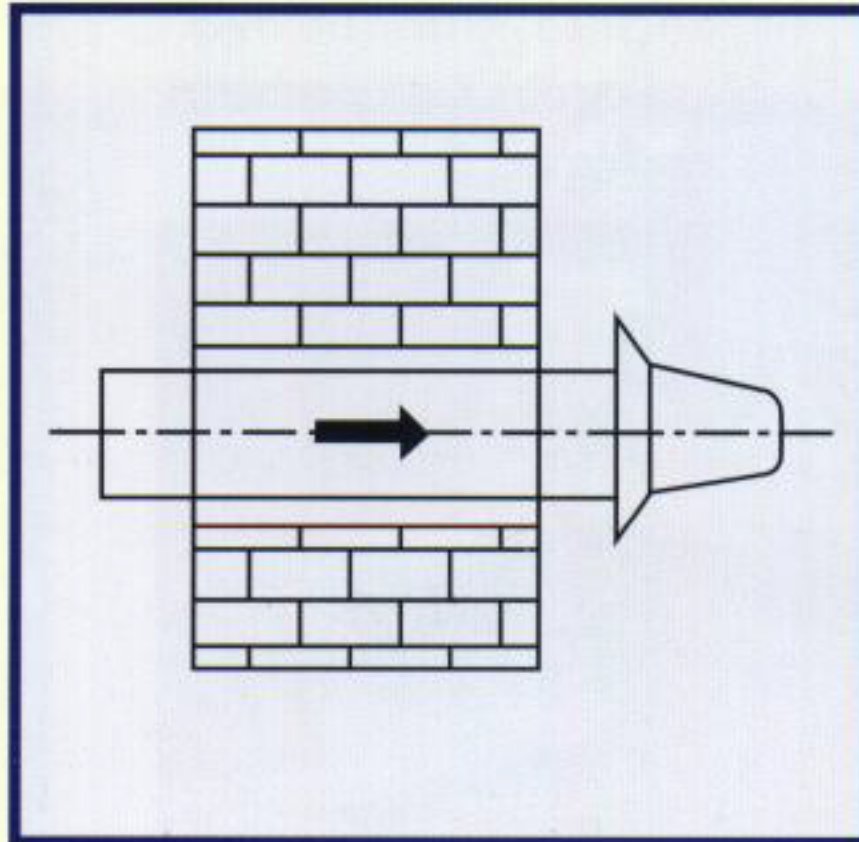
# SIGMA

## SIMPLE INSTALLATION PROCEDURE

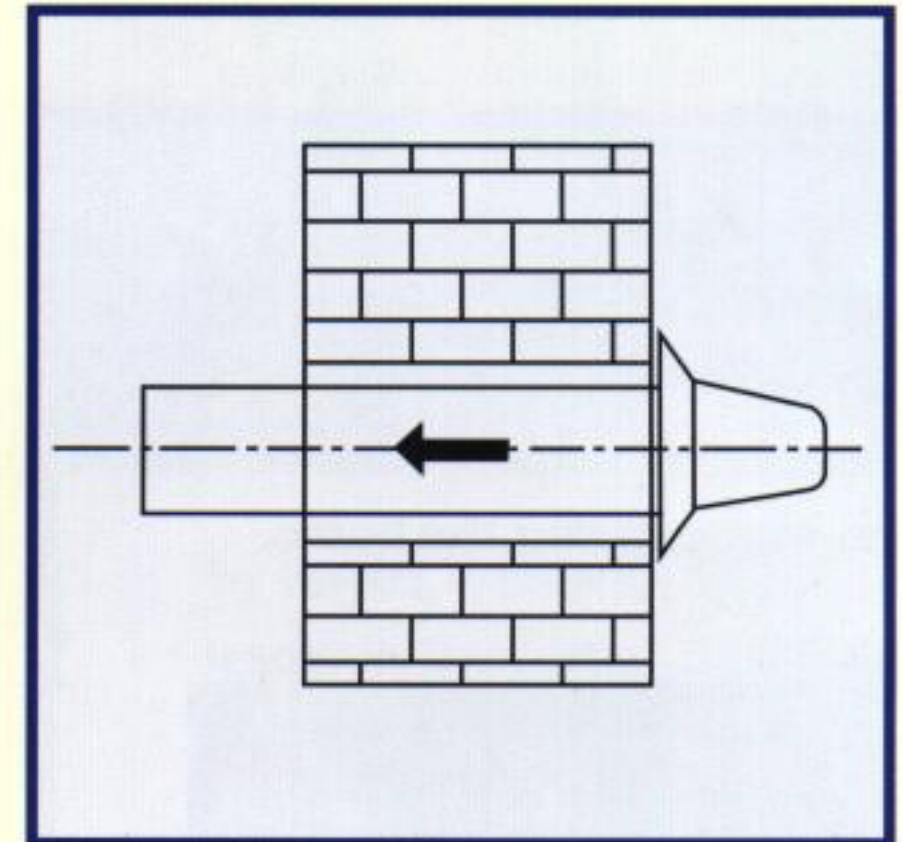
The Sigma is one of the easiest cast iron boilers to install. Compact in size and easy to handle, Sigma can be quickly installed with the minimum fuss and disruption to the home.



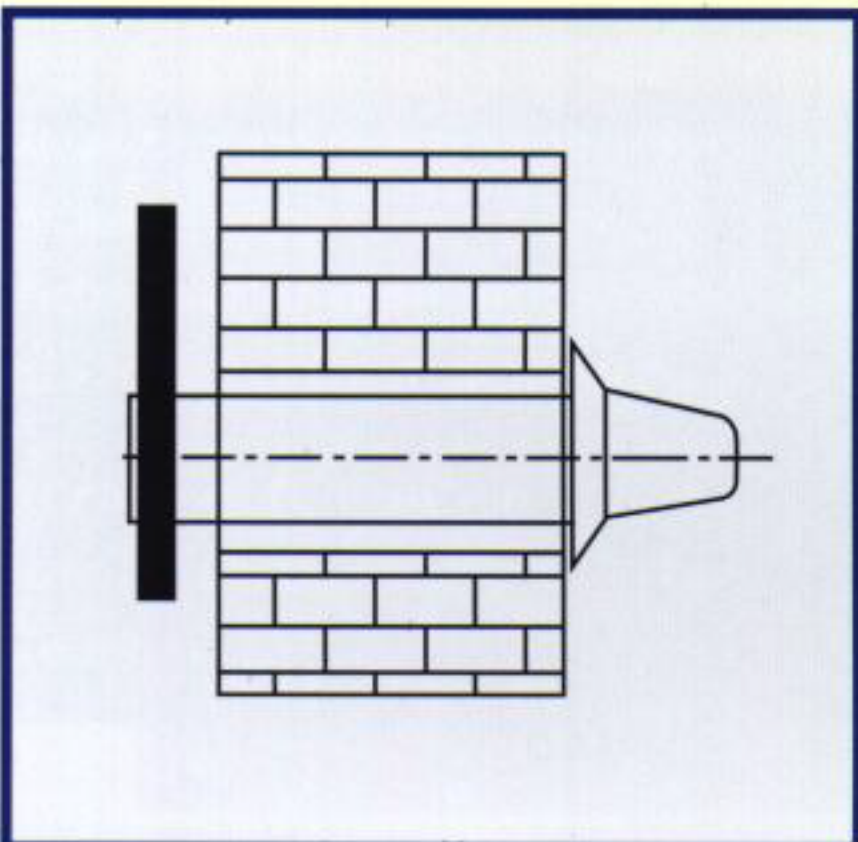
Core drill 127mm (5") hole.



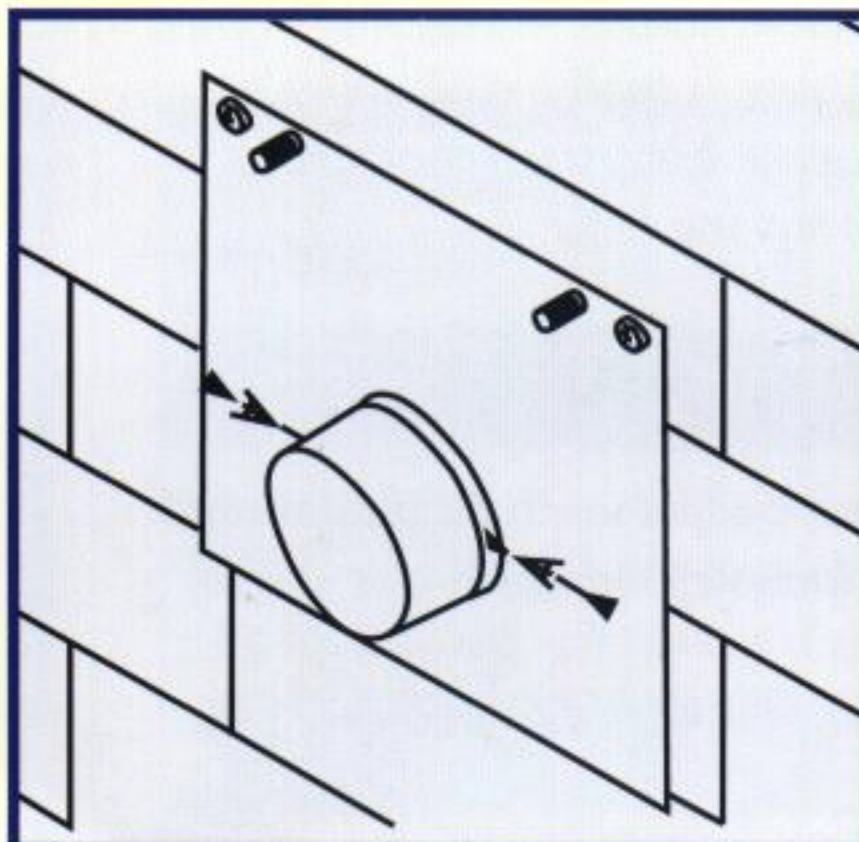
Push through the outer flue.



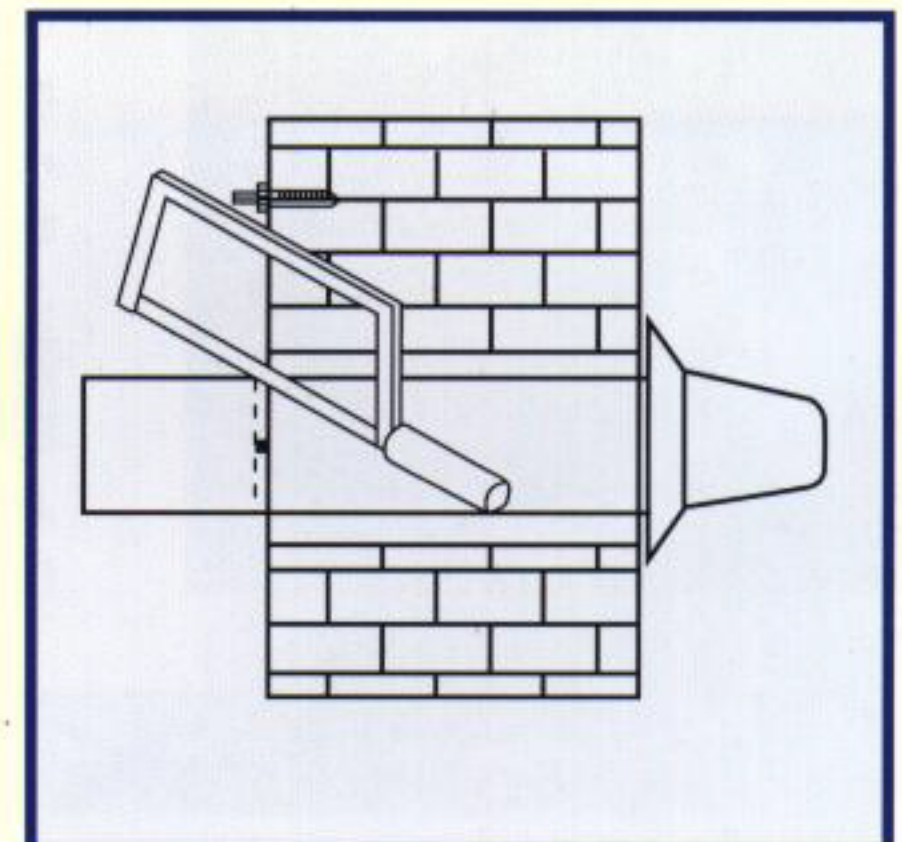
Gently pull back and seal.



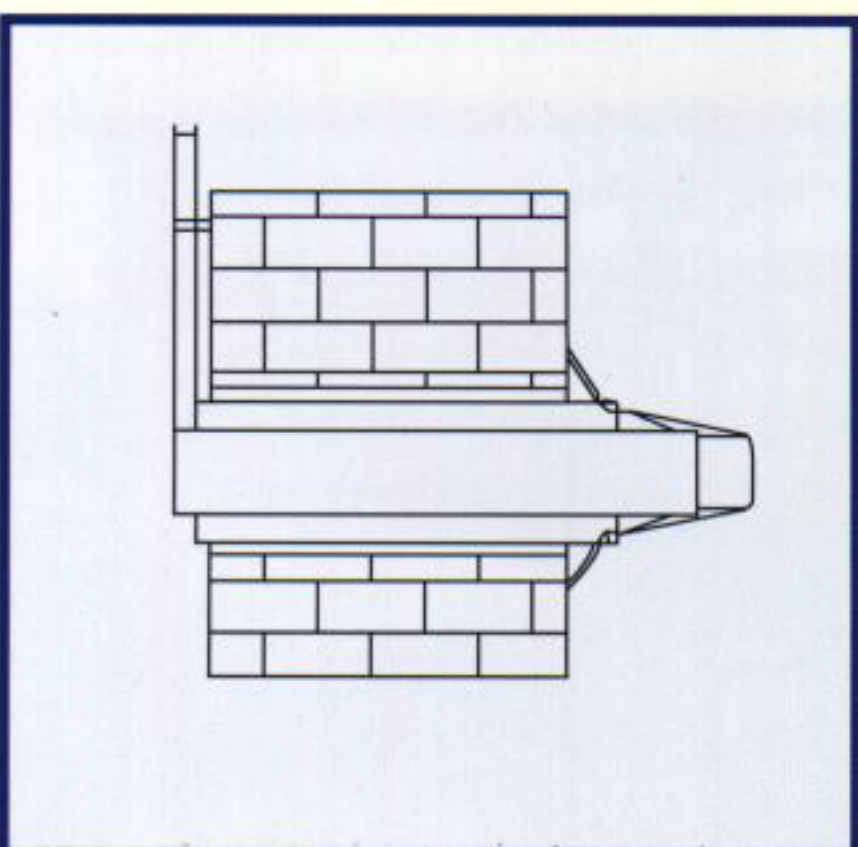
Fix wall plate.



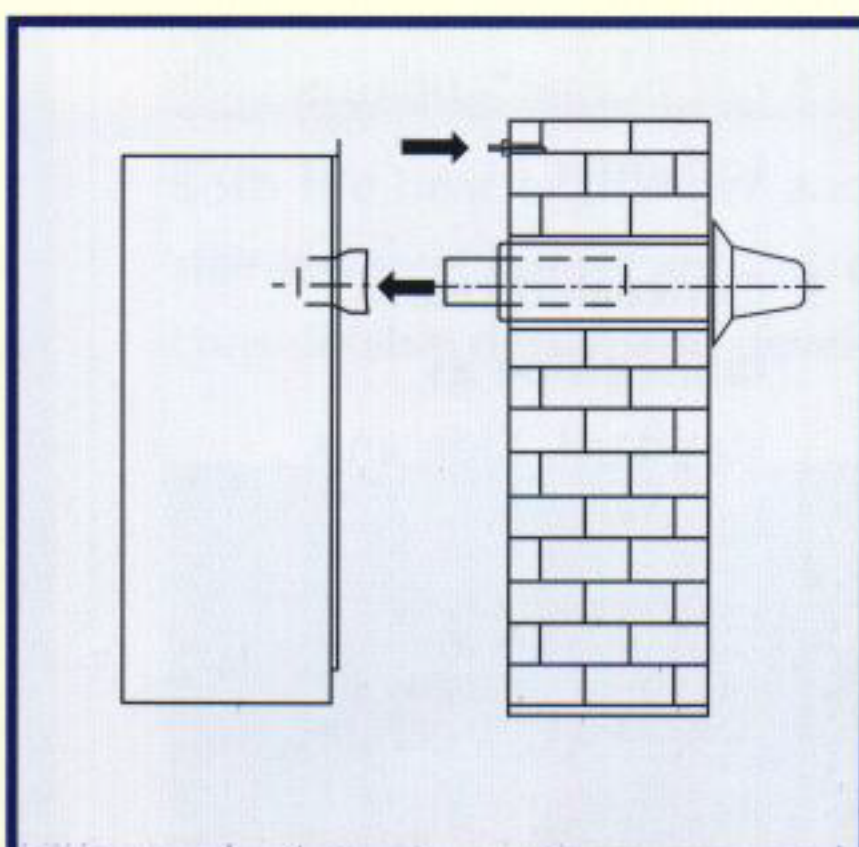
Secure flue.



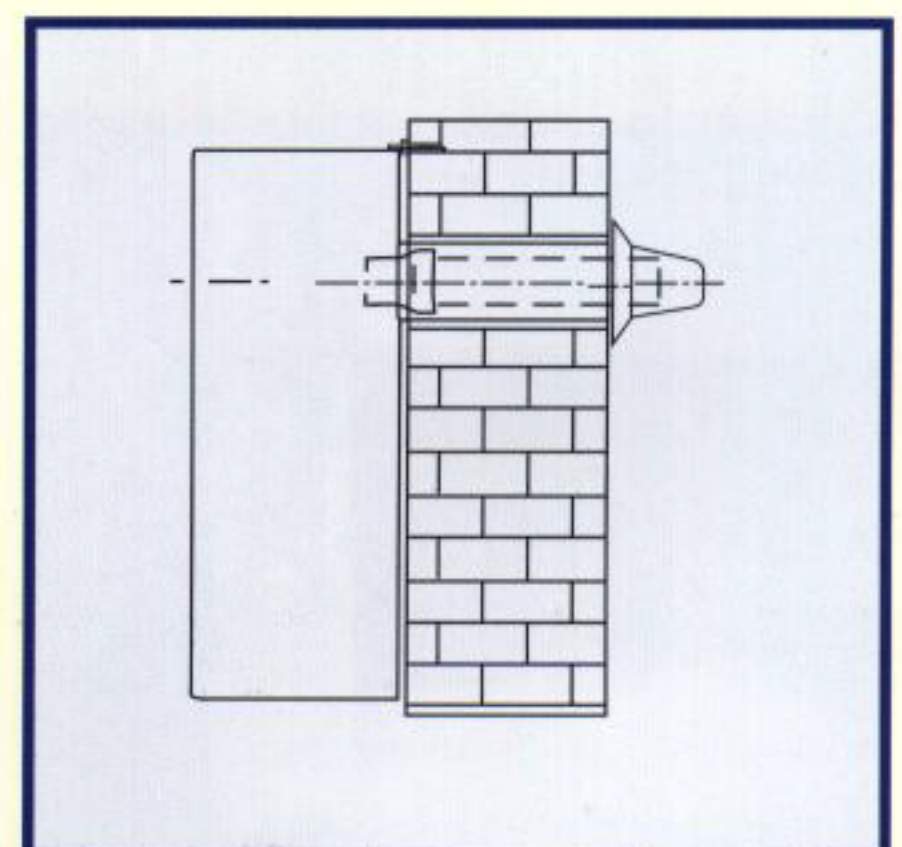
Cut the outer flue.



Insert aluminium flue pipe.



Lift boiler into position.



Secure boiler.

For further details refer to the instruction manual.



## TECHNICAL SPECIFICATION

Model	Output Min/Max	Dimensions			Weight Kg
		Height	Depth	Width (mm)	
SIGMA 30	5.5/8.8 Kw (19,000-30,000 Btu/h)	600	220	320	30
SIGMA 40	8.5/11.7 Kw (29,000-40,000 Btu/h)	600	220	320	30
SIGMA 50	11.4/14.7 (39,000-50,000 Btu/h)	600	220	400	35
SIGMA 60	14.4/17.6 (49,000-60,000 Btu/h)	600	220	400	35

## MAXIMUM FLUE LENGTHS

80 mm 2 Pipe System	100 mm Concentric		125 mm Concentric	
	Vertical	Horizontal	Vertical	Horizontal
40 m	4 m	3 m	5 m	5 m

## FÉRROLI - ONE OF THE WORLD'S LARGEST MANUFACTURERS

Férroli is one of the world's premier manufacturers of heating appliances. Its seven European plants produce over 300,000 domestic boilers every year and many thousands of commercial boilers with outputs up to 42 million Btu/h. It is also a major producer of steel, cast iron and aluminium radiators, air conditioning and hydro-massage baths and showers.



Férroli's modern  
Headquarters in Italy.



Férroli Limited, Stockton Close, Minworth Industrial Park,  
Minworth, Sutton Coldfield, West Midlands, B76 1DH  
Tel: 0121 352 3500 Fax: 0121 352 3505 Technical Helpline: 0121 352 3200

The European  
Approval of Safety  
and Efficiency

**ISO 9002**

The European  
Standard of  
Production Quality

**IP44**

International Code of  
Practice for Protected  
Electrical System

**British Gas**

GC No. 41-267-07  
GC No. 41-267-08  
GC No. 41-267-09  
GC No. 41-267-10