

FÉRROLI
Domina

DOMESTIC GAS-FIRED
COMBINATION BOILERS



Smaller

Lightener

THE *evolution* OF THE PERFECT COMBINATION

FÉRROLI Domina

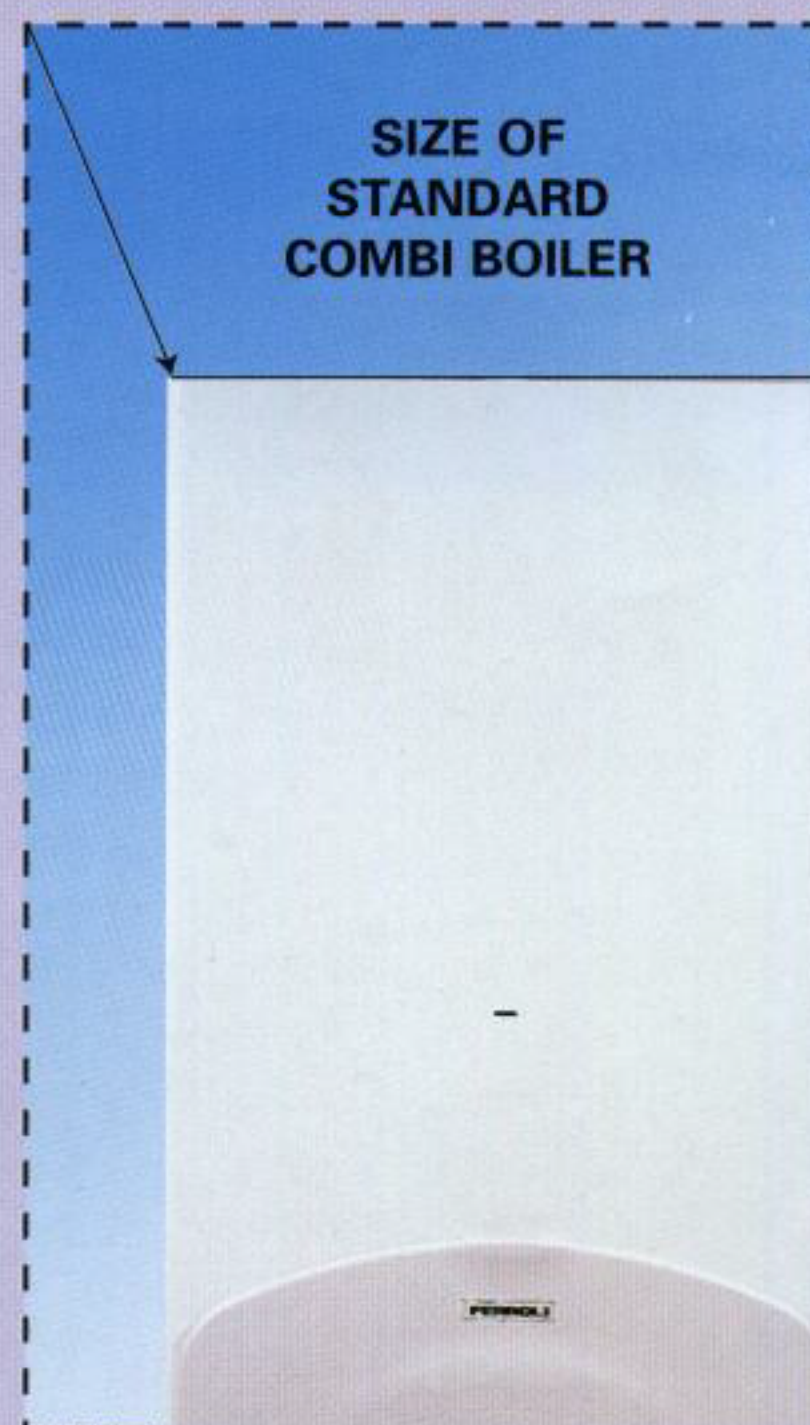
THE *evolution*
OF THE PERFECT
COMBINATION

OUR SMALLEST COMBI YET

Domina is the smallest, lightest and most versatile gas-fired combination boiler we have ever produced.

It may be small, but it offers all the advantages you have come to expect from a Férroli combination boiler while overcoming the traditional disadvantage of size. This means guaranteed quality, absolute reliability and of course maximum economy in use. And as with all combi boilers, there is no need for hot water cylinders or expansion tanks, therefore less plumbing is involved, making installation far simpler.

Being up to 30% smaller and 40% lighter than traditional models, it will fit unobtrusively almost anywhere in a home with the minimum of fuss.



DOMINA



RELAX... it's a Férroli



MORE SITING FLEXIBILITY THAN EVER BEFORE

Domina is a room-sealed boiler with a fanned flue that exits neatly from within the boiler casing. This gives it more siting flexibility. It can, for example, be installed out of sight in a kitchen cupboard or right up to a kitchen ceiling if space is at a premium. With a host of other flueing options, Domina can be installed virtually anywhere in a property!

ALL THE HEATING AND DOMESTIC HOT WATER FOR A BUSY HOME

With range rated outputs, Domina will easily cope with the heating and domestic hot water requirements of most homes. Excellent hot water flow rates mean there's always plenty of hot water on tap.

Future developments include a higher capacity Domina specifically designed for the home with larger heating or heavy domestic hot water requirements.

ELECTRONIC CONTROL

Thanks to Domina's electronic control system and new burner design, this versatile combi is one of the quietest, most reliable and efficient domestic boilers available.

SIMPLE-TO-USE CONTROLS

Controls for heating and hot water are easily accessible behind a drop-down flap on the front of the boiler. There is also a simple to use

diagnostics panel which enables the householder to quickly assess the operating condition of the boiler, a useful feature which can minimise unnecessary service call-outs.

Domina includes an electronic frost protection system and an optional plug-in time clock is also available.

ABSOLUTE RELIABILITY

Ferrol domestic heating appliances are renowned for their quality and reliability and meet all European standards of manufacture.



ENVIRONMENTALLY FRIENDLY

All Ferrol domestic appliances are designed and produced with environmental concerns high on the list of specification requirements. The Domina is no exception, with high efficiency and low Nox and Co2 emissions very much the order of the day.

SAFETY

Above all else, safety in operation is of prime importance. Domina is CE approved, has IP44 electrical protection and has seven safety protection devices incorporated in the boiler design to ensure total peace of mind for the user.

EXTENDED SERVICE CONTRACTS

Once the normal guarantee period expires, you can extend coverage, cost effectively, with a choice of Ferrol Service Contracts to suit your budget.

For a brochure, call us on **0121-352-3500**.



FÉRROLI Domina

DESIGNED AND ENGINEERED
FOR A FAST AND SIMPLE
INSTALLATION PROCEDURE

A MAJOR REDUCTION IN SIZE AND WEIGHT

IT'S SMALLER

Height:- 720mm

Depth:- 270mm

Width:- 460mm

IT'S LIGHTER

Lift weight:- 32Kg

IT'S MORE VERSATILE

Domina features a standard rear flue outlet that exits from within the boiler casing, which is ideal for the majority of installations. With no need for a flue turret or hood, the Domina can be installed in the most restricted areas.

Wherever it is installed, it will always look neat and unobtrusive with its stylish Italian design and compact dimensions.

NO COMPARTMENT VENTILATION

Being a fully room-sealed fanned-flue boiler, the Domina does not draw air for combustion from the room in which it is installed. Thus it can be sited in enclosed cupboards for a totally hidden installation.

PUSH-FIT FLUEING

Push-fit flueing makes for a speedy and simple fitting procedure. The flue sections come in 100mm and 125mm diameters, in lengths up to 12.5m, and simply push together, locking accurately into position first time, every time.



FLUE OPTIONS

While the standard rear flue outlet provides for most siting situations, the Domina can be flued vertically, by a simple adjustment of the fan, or by using the optional side flue exit kit, it can be flued to the left or right.

A versatile two pipe flueing system can also be used with the boiler, which includes both 45° and 90° bends. With the two pipe system, flue runs up to 20m are possible, which should resolve virtually every siting problem likely to be encountered.

RELAX... it's a Ferröli

SIMPLE INSTALLATION



Step 1. Drill flue hole.



Step 2. Slide flue, with terminal fitted, into position.



Step 3. Fit boiler mounting plate.



Step 4. Fit boiler to mounting plate.

ELECTRICAL CONNECTION

Fully pre-wired and supplied with a fly lead, the Domina requires virtually no electrical work. An optional 'plug-in' time clock is available which is simple to fit to a factory prepared location on the control panel.



LOW WATER PRESSURE

Domina will operate at a minimum mains pressure of only 0.1 bar for domestic hot water (but, of course, at a reduced flow rate). Domina is equally at home in high rise and low rise properties.

SERVICING

Easy access to all key components for servicing is from the front of the boiler. A swing adjustment panel drops down to reveal the boiler electronics, with separate electronic circuit boards for ignition and control functions.

SECURITY ON SITE

All Férroli boilers can be supplied with a range of security devices to prevent theft on site, including heavy duty wall brackets with padlocks and electronic tagging.



FÉRROLI

Domina

INNOVATION - OUR MOST
TECHNICALLY ADVANCED
COMBINATION BOILER YET



UNIQUE DOUBLE HEAT EXCHANGER

Férroli's copper heat exchanger, one of the most advanced on the market, is the result of considerable research and development by one of the world's acknowledged leaders in heat transfer technology. No diverter valve is required, meaning fewer components to go wrong and continued domestic hot water availability, even if the pump fails.

NEW 'COOL BURN' BURNER

One of the latest developments, Férroli's new super quiet burner, has been designed to deliver maximum efficiency while keeping Nox and Co2 levels to an absolute minimum. Another major technical advance from Férroli.



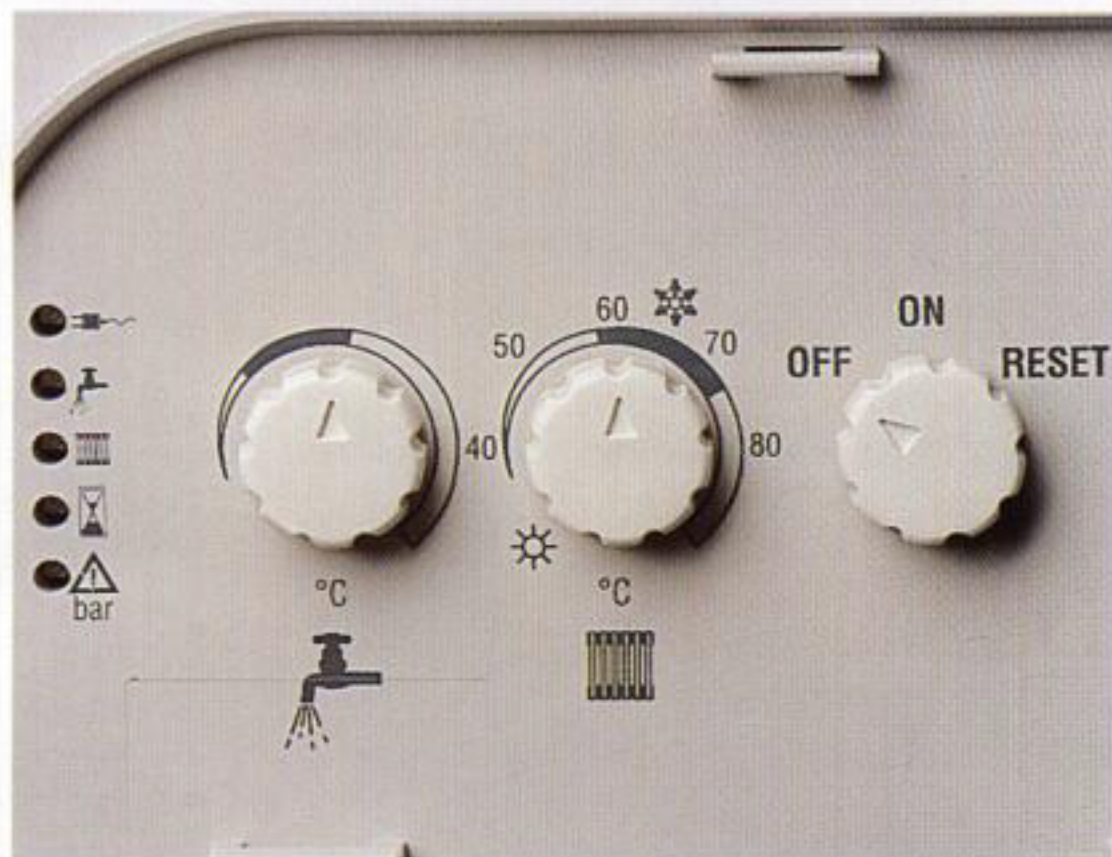
AUTOMISER

Domina incorporates the latest ignition and boiler control system - AutoMiser. This means that the boiler automatically sets its own output each time heat is called for and then modulates, ensuring optimum performance. Self-regulation is a major aid to reducing fuel bills and keeping Co2 and Nox levels to an exceptionally low level.

SELF-DIAGNOSTICS

A simple-to-use system of lights situated on the boiler control panel gives an 'at a glance' appraisal of the boiler's operating condition. This can reduce the number of unnecessary service call-outs by enabling the user to identify likely problem areas over the phone.

DOMESTIC HOT WATER TEMPERATURE CONTROL



A variable thermostat for domestic hot water temperature can be found on the boiler control panel.

FROST PROTECTION

Domina incorporates a simple electronic frost protection system.

NO DIVERTER VALVE

Unlike most combination boilers, Férroli's Domina requires no diverter valve, which means fewer components to go wrong, plus the added advantage of domestic hot water availability, even if the pump fails.

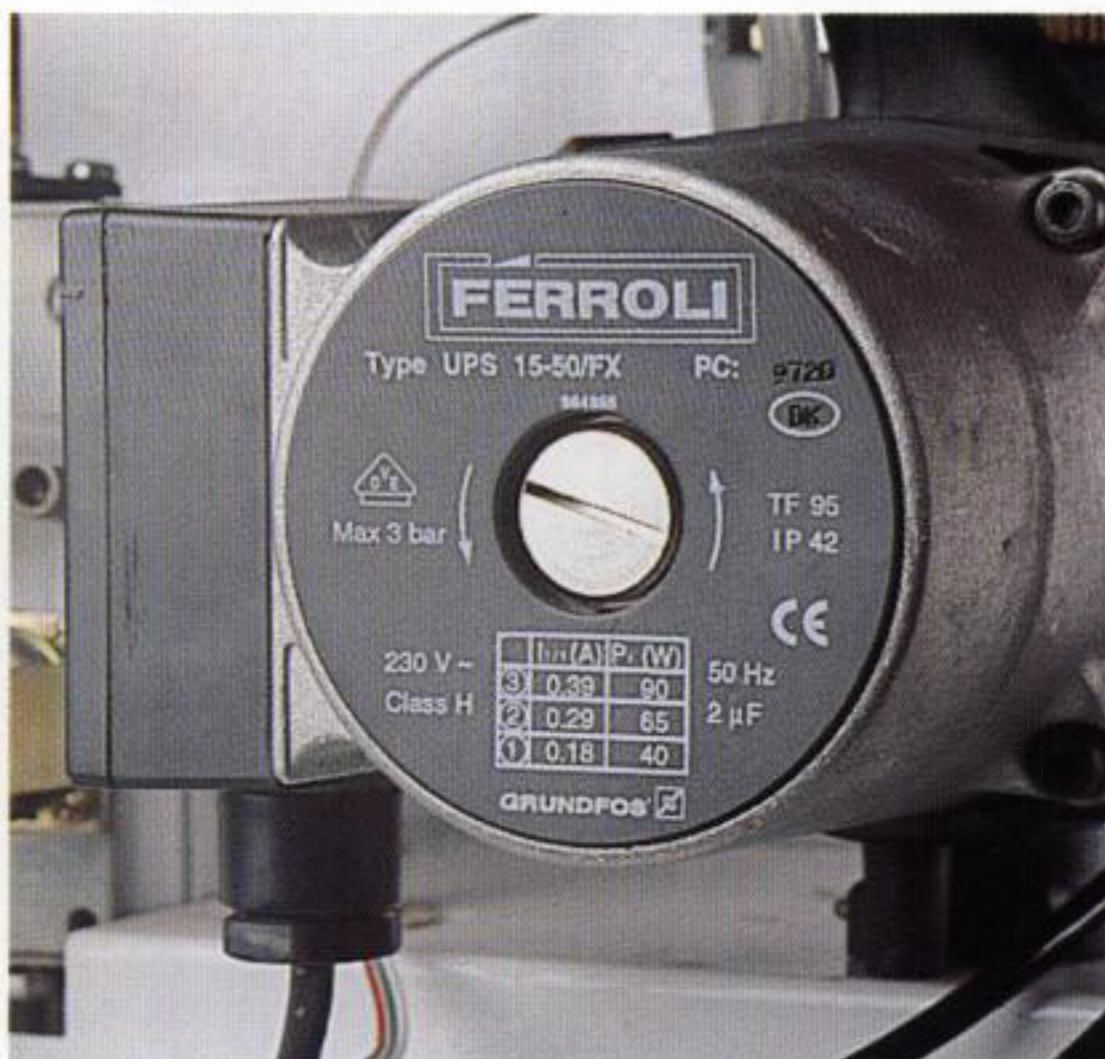
OPTIONAL CONTROLS

Domina is available with a number of additional controls, including a 'plug-in' time clock, which fits neatly to a factory-prepared location on the control panel, and Chronotherm, an electronic programmer. A Férroli room stat and an outside temperature compensation control are also available.



REGULAR PUMP SPIN

During the summer months when the central heating is switched off, the pump will spin briefly each time domestic hot water is used. This helps to ensure pump reliability throughout the heating season by reducing the possibility of pump impeller locking.



GUARANTEES

All Férroli boilers are fully guaranteed to the industry standard of one year.

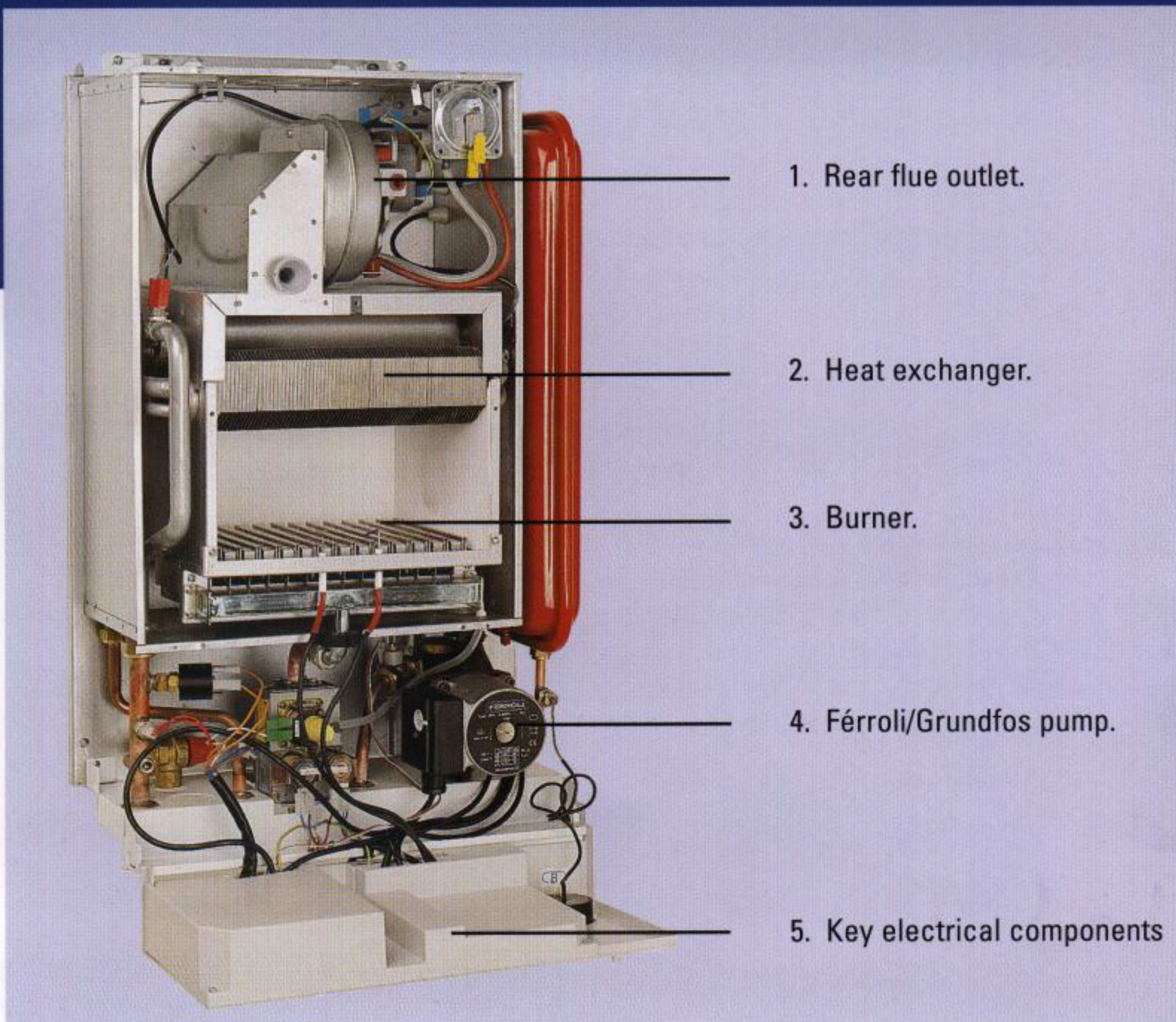
RELAX... it's a Férroli



FÉRROLI Domina

DOMINA 'AT A GLANCE'

1. Rear flue outlet allows total siting flexibility.
2. Férroli's innovative 'double' heat exchanger eliminates the need for diverter valve. Domestic hot water even if pump fails.
3. 'Cool burn' burner ensures low Nox and Co2 emissions. Modulates for maximum economy.
4. Férroli/Grundfos pump - standard components ensure ready availability of parts.
5. Electrical control systems protected to IP44 standard.



TECHNICAL SPECIFICATION

	DOMINA 80	DOMINA 100
Range rated output	9.7 - 23.3 Kw 33,000 - 79,500 Btu/h	12.3 - 30 Kw 42,000 - 102,000 Btu/h
DIMENSIONS:		
Height	720mm	720 mm
Depth	270mm	360 mm
Width	460mm	460 mm
Lift weight	32 Kg	36 Kg
Minimum operating pressure for heating	1 bar	1 bar
Maximum operating pressure for heating	2 bar	2 bar
Minimum operating pressure for domestic hot water	0.1 bar	0.1 bar
Maximum operating pressure for domestic hot water	6 bar	6 bar

	DOMINA 80	DOMINA 100
Domestic hot water flow rates	9.54 litres/min (2.12 gals/min) at 35°C temperature rise	12.28 litres/min (2.73 gals/min) at 35°C temperature rise
MINIMUM CLEARANCES (rear fanned-flue)		
Left and right hand	5mm	5mm
Front	290mm	380mm
Top	50mm	50mm
Control System	AutoMiser self-regulating control system automatically governs gas consumption in line with system demand, (see previous page).	

NB. Domina 100 will be launched in Autumn 1998.



ISO 9002
The European Standard of Production Quality

IP44
International Code of Practice for Protected Electrical System

RF Spec
Protection from radio frequency interference. Conforms with the European Standards EEC 87/308 and EN 55014.

British Gas
GC No. 47-267-23



Water Research Council
Ref No: 98007

Férroli pursues a policy of continuous product improvement and reserves the right to alter specifications and design without prior notice.

FÉRROLI - ONE OF THE WORLD'S LARGEST MANUFACTURERS

Férroli is one of the largest and most successful manufacturers of heating appliances in the world today. Its seven European plants produce over 300,000 domestic boilers every year and many thousands of commercial boilers with outputs up to 42 million Btu/h. It is also a major producer of steel, cast iron and aluminium radiators, air conditioning and hydro-massage baths and showers.



Férroli Limited, Stockton Close, Minworth Industrial Park,
Minworth, Sutton Coldfield, West Midlands B76 1DH
Tel: 0121-352-3500 Fax: 0121-352-3505
Technical Helpline: 0121 352 3200