

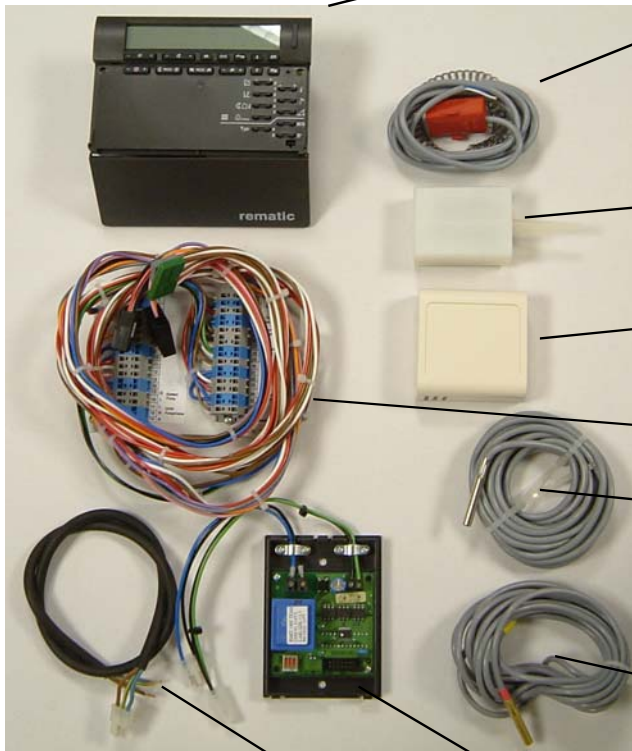
Instructions for Installing the *rematic*[®] 2945 C3 K Control



Remeha Quinta 30/45/65/85



Single Boiler *rematic*® 2945 C3 K control Kit (Broag Part No KT196)



1. 2945 C3 K *rematic*® Control
Part No 53991
 2. Flow sensor (strap on) Only required for
multi boiler installations
Part No 38469
 3. Outside sensor Part No 38467
 4. Room Sensor Part No 50679
 5. *rematic*® Adaptor plate with harness
Part No 55739
 6. DHW immersion sensor Part No 50151
(For when the *rematic*® is controlling the
DHW)
 7. DHW immersion sensor Part No S43946
(Note the red band—this sensor should be
used if the boiler is controlling the DHW)
 8. *rematic*® Interface Part No 55473
 9. Boiler pump cable Part No S56034
- Not illustrated
10. Fitting Instructions
 11. Technical Information
 12. User instructions

For multi boilers use this kit plus a *rematic*® interface for each additional boiler

Fitting Instructions for

IMPORTANT NOTE

The boiler must be electrically disconnected before any work is carried out.



Drop down lower (grey) cover and remove the two securing screws from the left hand door.
(retain for re-securing)



Open both doors to reveal main electrical compartment and site wiring connections.



Gently prise back the 4 plastic retaining clips and remove the steel closing plate from the back of the left hand door.



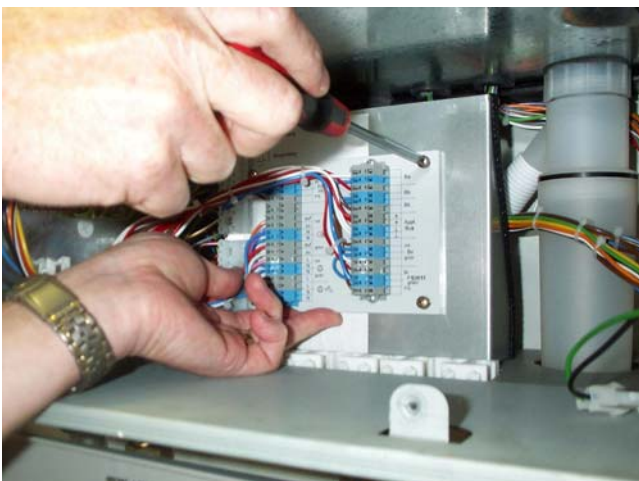
Remove the plastic cover from the front of the left hand door (push free from the back)



Place 2945 C3 K *rematic*[®] control in opening and remove the control cover plate (press down and in the direction of the arrow)



Secure the control using the two locking screws (quarter turn latches) located just below the display on the left and right hand sides as shown



Fit the Adapter plate (c/w with wiring harness) to the pre-drilled holes in the main terminal strip mounting plate using the 4 x screws supplied.



From the wiring harness insert the 4 plugs (two black, one green and one grey) into positions P3, P2, P11 and P12 in the back of the 2945 C3 K *rematic*[®] control unit.

Connect the two other plugs (K1 and K2) to their mating plugs in the boiler's wiring harness located on the L/H side of the compartment,



Replace the steel closing plate in the back of the door (taking care that the wires are located in the cut out)



Locate the standard interface, bottom R/H corner in the R/H door

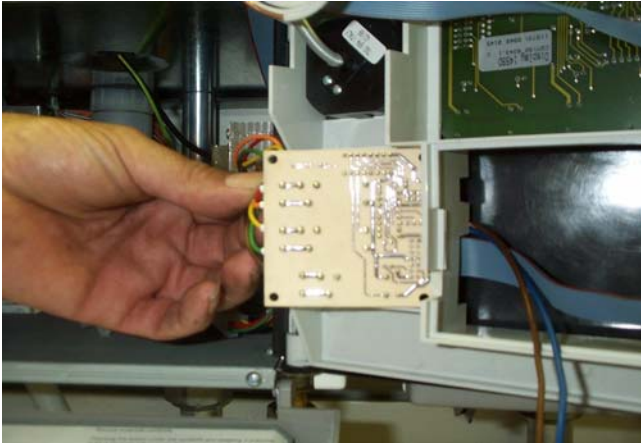
NOTE: For multiple boiler installations each boiler must have the standard 0-10v interface removed and replaced with the *rematic*[®] interface (part No. 55473).



Open the R/H door and front smoked grey panel to reveal both sides of the standard interface. Shown here in the bottom L/H corner

Unplug all connecting cables on the interface

Release the interface from its mounting using a flat bladed screw driver on the R/H of the board (from the smoked grey panel side).



Release the PCB from the L/H corner of the door, unclip from it's mounting and leave loose



Fit new *rematic*[®] interface making sure that the blue/brown cables & connector board pass through slot by the PCB and the green/black cable passes through the slot in the Interface recess.

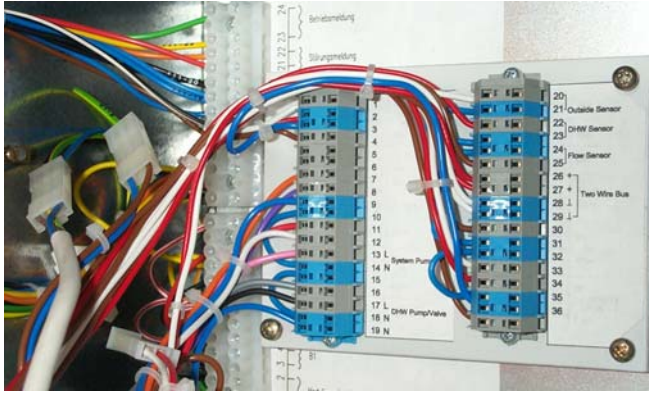


Re-connect data cable to *rematic*[®] interface and close smoked grey panel. And re-fit the PCB back into the L/H corner



Plug *rematic*[®] interface cables into mating boiler plugs as follows.

- X18A (interface) to X18 (boiler)
- X19A (interface) to 19 (boiler)



Mount outside sensor in a sheltered position on a north facing wall wire back to boiler

Fit flow sensor on common flow pipework (multi boilers only), wire back to *rematic*® adapter

Select which DHW sensor to use (red band for boiler control)

Fit DHW sensor in a pocket in the DHW secondary and wire back to *rematic*® adapter plate or boiler terminal strip (depending on which sensor is in use)

A 1/2" BSP x 35mm long pocket is available to accept the DHW sensor if required Parts No 55461

Mount room sensor in a suitable ref room wire back to *rematic*® adapter

Sensor wiring multi strand two core cable 0.75mm² , screened if run with power cables. (screen must be connected to earth in panel). Max length 100Meters



Close both doors and secure with the 2 existing screws.

Place Instructions in the door pocket with the boiler booklet

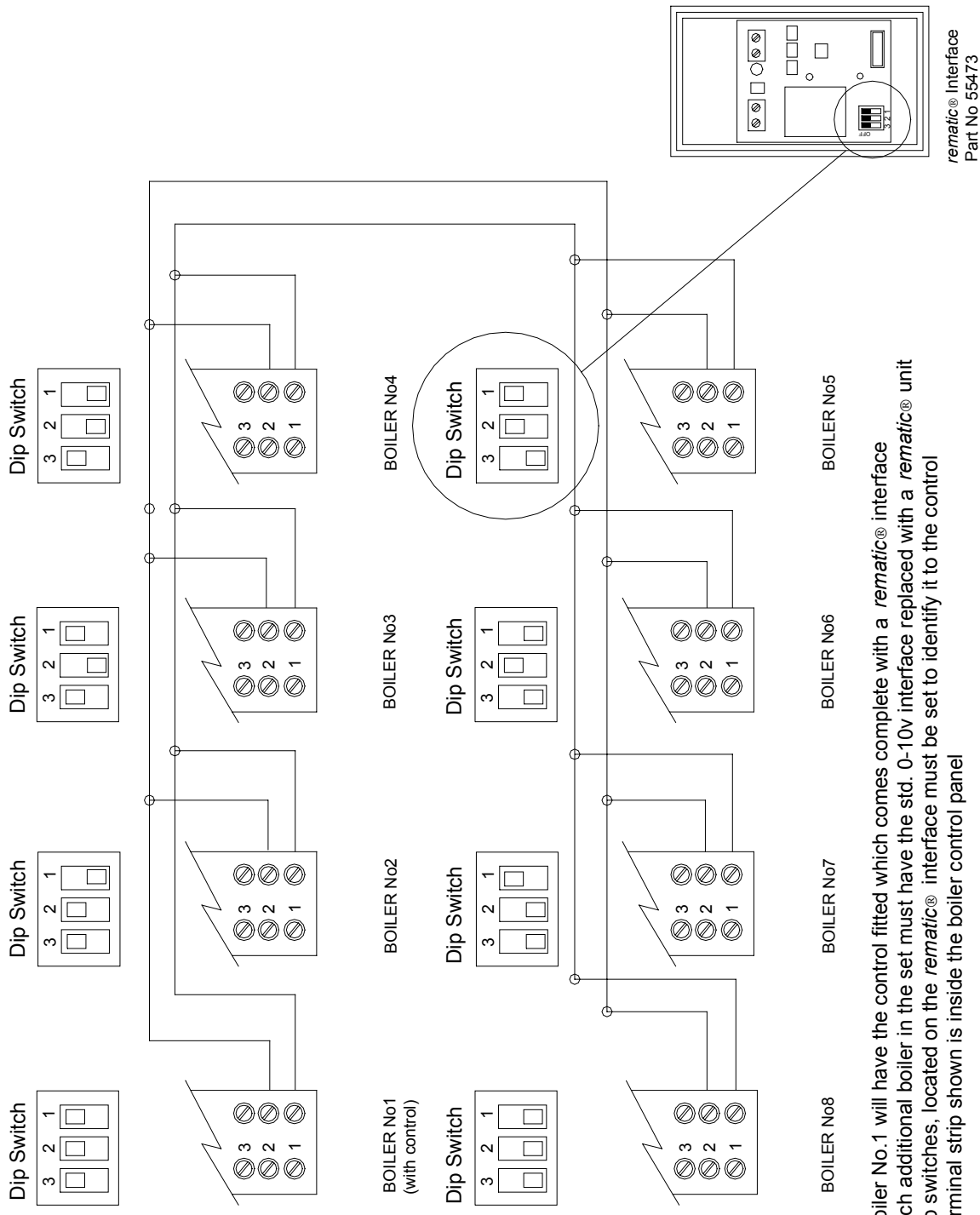
Check boiler control interface selection Code **9** is set to **0 1** (external interface)

For multi boiler installations the interface dip switches must be set in accordance with the details on page 8

Re-establish power supply and set up the control to suit the design parameters of the system and the occupancy time requirements - see technical information supplied

Close grey drop down door

Multi boiler connections and dip switch settings



rematic® Interface
Part No 55473

NOTE: Boiler No.1 will have the control fitted which comes complete with a rematic® interface
 Each additional boiler in the set must have the std. 0-10v interface replaced with a rematic® unit
 Dip switches, located on the rematic® interface must be set to identify it to the control
 Terminal strip shown is inside the boiler control panel

Sensor resistances / temperature table

Temperature °C	<i>rematic</i> [®] adapter plate sensor Ω	Red band sensors Ω
-10	27665	58820
-5	21165	45910
0	16325	36100
5	12695	28590
10	9950	22790
15	7855	18290
20	6245	1477
25	5000	12000
30	4029	9805
40	2663	6653
50	1802	4609
60	1244	3253
70	876	2337
80	628	1707
90	458	1266
100	339	952

Component parts of 2945 *rematic*[®] kit Part No KT 196

Item No	Part No	Detail
1	53991	Control
2	38469	Flow sensor
3	38467	Outside sensor
5	55739	Adapter plate
8	55473	Interface
4	50679	Room sensor
6	50151	DHW sensor
7	S43946	DHW sensor (red band)
9	S56034	Pump cable

}
 }
 }
 } Complete Set 55729
 }
 }
 }

Remeha Quinta 30/45/65/85



Head Office
Broag Ltd
Remeha House
Molly Millars Lane
Wokingham
Berkshire RG41 2QP
Tel : 0118 978 3434
Fax : 0118 978 6977
e Mail : boilers@broag-remeha.com
Web Site : www.uk.remeha.com

The content in this brochure is based on the latest information available at date of publication and may be subject to revisions.

We reserve the right to continuous development in both design and manufacture, therefore any changes to the technology or equipment employed may not be retrospective nor may we be obliged to adjust earlier supplies accordingly

