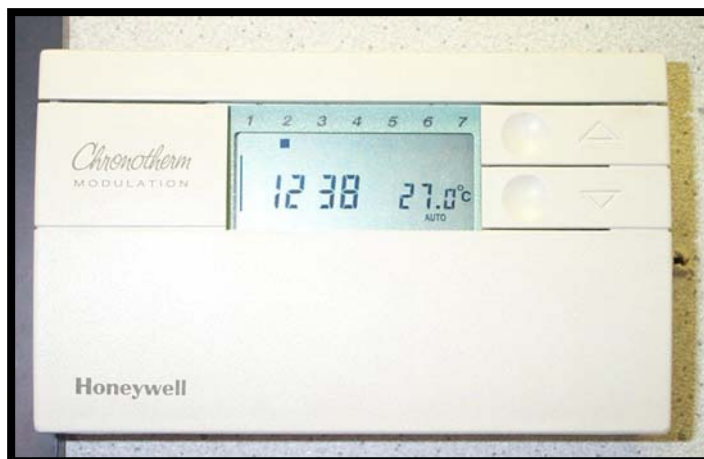


Honeywell Chronotherm Fitting Instructions

Remeha Quinta 45/65



Before installation the following choice should be made:

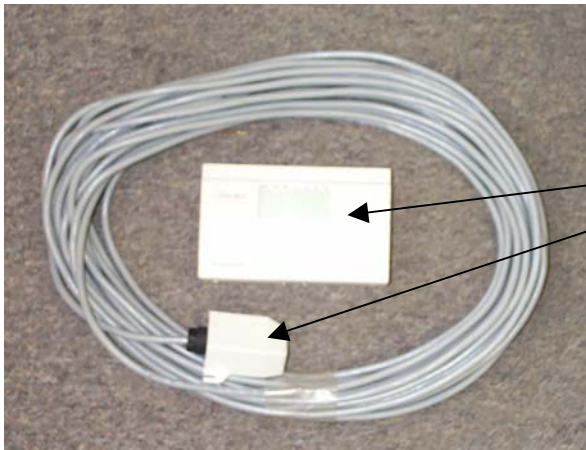
1. Boiler control by outside weather compensation with internal room adjustment
2. Boiler control by outside weather compensation only

Choice 1 - A reference room will need to be selected (leave dip switches to off- factory default)

Choice 2 - The control can be mounted to suit access only (set switches 1&2 to on)

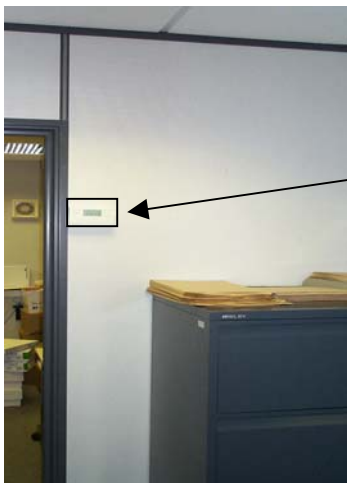
IMPORTANT NOTE

The boiler must be electrically disconnected before any work is carried out.



Kit Components

Chronotherm control
Outside sensor c/w cable
Documentation



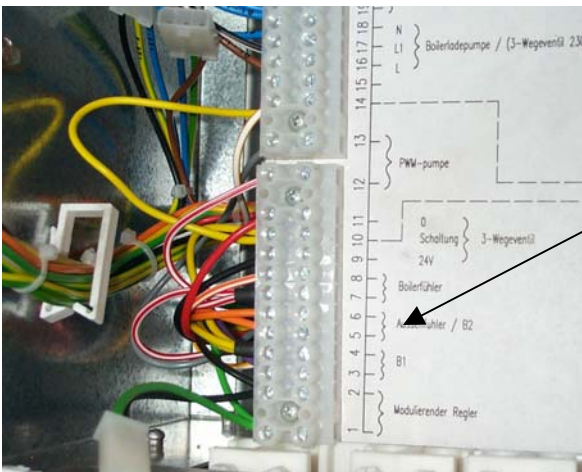
Fit Chronotherm control to a vertical wall
approx 1.5M from the floor.
For room adjustment option choose a room
that will provide the best average conditions
and ensure that the control is positioned to
avoid abnormal heating influences



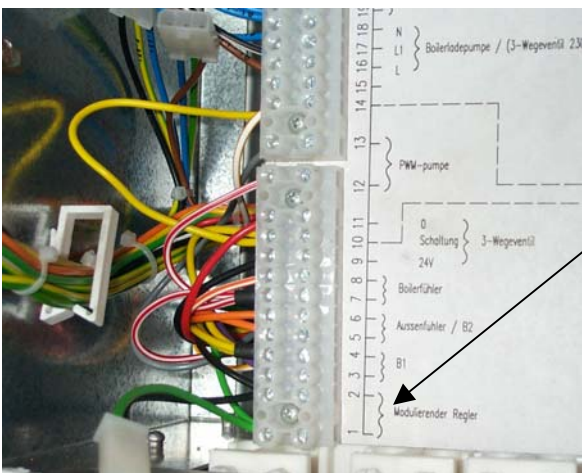
Drop down lower (grey) cover and remove the two securing screws from the left hand door. (retain for re-securing)



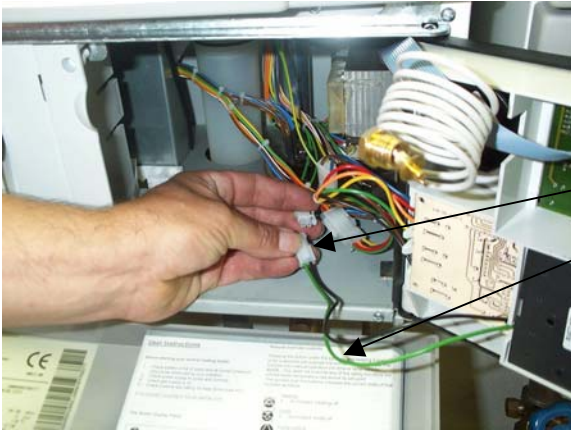
Open both doors to reveal main electrical compartment and site wiring connections.



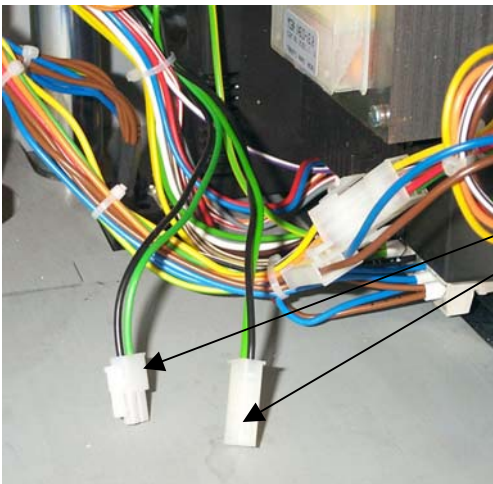
Fit outside sensor in a sheltered position on a north facing wall.
Connect to the boiler's main terminal strip (terminals 5 & 6) using 0.75mm multi strand cable (screened if run with power cables) maximum length of 100M



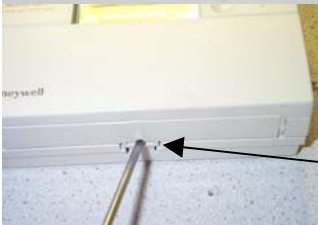
Wire the Chronotherm back to the boiler's main terminal strip (terminals 1 & 2) using 0.75mm multi strand cable (screened if run with power cables) maximum length of 100M
NOTE: If screened cable is used or the supplied cable extended please ensure that the screen is complete and earthed at the control terminal.



Disconnect the 0-10v interface from the boiler wiring (plug X19) and unplug the ribbon cable. Coil up the loose cable and tape it to the back of the interface module to keep it clear of the door.



Connect the two boiler plugs X19 and X19a together



For outside weather compensation only option Remove control from it's wall plate (using a small screwdriver depress the small latch in the centre of the underside)



On rear of control Set dip switches No. 1 and 2 to on position

FINAL OPERATION

Close the doors and secure with the 2 existing screws.

Place instructions with the boiler booklet in the pocket of the grey drop down cover

Close the drop down cover.

Re-establish the power supply and set up control in accordance with the supplied instructions and the building design parameters.

Re-set boiler control Interface selection (section 6.6 in the Technical Information booklet)

Code **9** to **00** (Internal)



Broag Ltd

Head Office

Remeha House,
Molly Millars Lane, Wokingham,
Berkshire RG41 2QP
Telephone (0118) 9783434
Fax (0118) 9786977
E-mail boilers@broag-remeha.com
www broag-remeha.com

Branch Office

Unit 3, Kestrel Close,
Quarry Hill Industrial Estate
Ilkeston, Derbyshire DE7 4RD
Telephone (0115) 9440778
Telefax (0115) 9440588

