

Product Series	210 ECO
Issue Date :	SEPT 2001



TECHNICAL SPECIFICATION SHEET

MODEL : Gas 210-3 ECO

No of SECTIONS : 3

General Details

Fully condensing floor standing boiler supplied c/w electronic temperature and safety controls. Sectional cast aluminium heat exchanger. Powder coated, enamel steel casing forming sealed air box. Ultra low Nox, on / off, high / low or fully modulating (10-100%), pre - mix burner, gas/air ratio control for maximum efficiency and minimum emissions. Intelligent "abc[®]" boiler control system c/w numerical display providing operating and service parameters. Manufactured to ISO 9001. CE approved and supplied pre-assembled.

Output @ 80/60°C kW :	8 - 80	Efficiency % GCV :	> 93
Weight (dry) kgs :	130	Min Gas Pressure mbar :	17
Overall Dim WxHxD mm :	1190x1290x450	Casing Colour BS RAL :	2002
Radiated Losses % :	< 0.1		
BURNER TYPE			
	Pre-mix	Low Nox Atmospheric	
Std Fuel Available :	Natural Gas	Gas Conn. size BSP :	1¼" M
Flame Protection :	Ionisation	Nox Level ppm @ 0% O₂ :	< 20
Noise Levels dB(A) :	< 57	Nox Level mg/kWh:	< 35
Ignition :	Electronic	Gas Consumption M³/h:	8.6 NG
HYDRAULICS			
Water Content ltrs :	12.3	Resistance @ 11°C Δt.mb :	496
Nom Flow @ 11°C Δt l/s :	1.74	Resistance @ 20°C Δt. mb:	150
Min Return Temp °C	20	Min Flow Rate l/s :	None
Op Press min/max bars :	0.3 / 6 open vent	Std Operating Temp °C :	20 - 90
Op Press min/max bars :	0.8 / 6 pressurised	Max Operating Temp °C :	100
Test Press bar :	6	Boiler Connections BSP :	1¼" M
Condensate Conn. mm:	32 o/d	2nd Return Conn BSP :	1¼" M (option)
FLUE/ AIR INLET			
Supplied as standard for conventional flue with optional kit for room sealed operation			
Residue Fan Duty Pa :	115	Air Inlet Connection mm :	150 i/d
Flue Diameter mm :	150 i/d	Flue Gas Mass kgs/hr :	137
Flue Gas Volume Cu M/h :	108		
ELECTRICAL			
Insulation Class IP :	20	Power Supply :	230.1.50
Start Current amps :	-	Run Current amps :	0.4
Fuse Rating Amps :	6.3	Power Consumption W :	12 / 92
Modulating input V dc :	0-10	Controls Voltage V ac :	24 (max 4VA)
CONTROLS			
Standard :	High / Low	BMS Modulating (10-100%)	On / Off
	Manual o/ride	Hours Run Indication	
	High limit protection	Low water protection	
	Operating status indication		
Optional :	Volt free common alarm and boiler run indication		
	Safety interlock control pair (24V ac)		
	Rematic Optimising / Compensator (two wire communicating modulating)		
	DHW Time control	Using Rematic control	

Product Series	210 ECO
Issue Date :	SEPT 2001



TECHNICAL SPECIFICATION SHEET

MODEL : Gas 210-4 ECO	No of SECTIONS : 4
------------------------------	---------------------------

General Details

Fully condensing floor standing boiler supplied c/w electronic temperature and safety controls. Sectional cast aluminium heat exchanger. Powder coated, enamel steel casing forming sealed air box. Ultra low Nox, on / off, high / low or fully modulating (10-100%), pre - mix burner, gas/air ratio control for maximum efficiency and minimum emissions. Intelligent "abc[®]" boiler control system c/w numerical display providing operating and service parameters. Manufactured to ISO 9001. CE approved and supplied pre-assembled.

Output @ 80/60°C kW :	12 - 120	Efficiency % GCV :	> 93
Weight (dry) kgs :	150	Min Gas Pressure mbar :	17
Overall Dim WxHxD mm :	1190x1290x450	Casing Colour BS RAL :	2002
Radiated Losses % :	< 0.1		

BURNER TYPE	Pre-mix	Low Nox Atmospheric	
Std Fuel Available :	Natural Gas	Gas Conn. size BSP :	1¼" M
Flame Protection :	Ionisation	Nox Level ppm @ 0% O₂ :	< 20
Noise Levels dB(A) :	< 57	Nox Level mg/kWh:	< 35
Ignition :	Electronic	Gas Consumption M³/h:	12.9

HYDRAULICS			
Water Content ltrs :	16.4	Resistance @ 11°C Δt.mb :	446
Nom Flow @ 11°C Δt l/s :	2.61	Resistance @ 20°C Δt. mb:	135
Min Return Temp °C	20	Min Flow Rate l/s :	None
Op Press min/max bars :	0.3 / 6 open vent	Std Operating Temp °C :	20 - 90
Op Press min/max bars :	0.8 / 6 pressurised	Max Operating Temp °C :	100
Test Press bar :	6	Boiler Connections BSP :	1¼" M
Condensate Conn. mm:	32 o/d	2nd Return Conn BSP :	1¼" M (option)

FLUE/ AIR INLET	Supplied as standard for conventional flue with optional kit for room sealed operation		
Residue Fan Duty Pa :	85	Air Inlet Connection mm :	150 i/d
Flue Diameter mm :	150 i/d	Flue Gas Mass kgs/hr :	205
Flue Gas Volume Cu M/h :	161		

ELECTRICAL			
Insulation Class IP :	20	Power Supply :	230.1.50
Start Current amps :	-	Run Current amps :	0.4
Fuse Rating Amps :	6	Power Consumption W :	12 / 84
Modulating input V dc :	0-10	Controls Voltage V ac :	24 (max 4VA)

CONTROLS			
Standard :	High / Low	BMS Modulating (10-100%)	On / Off
	Manual o/ride	Hours Run Indication	
	High limit protection	Low water protection	
	Operating status indication		
Optional :	Volt free common alarm and boiler run indication		
	Safety interlock control pair (24V ac)		
	Rematic Optimising / Compensator (two wire communicating modulating)		
	DHW Time control	Using Rematic control	

Product Series	210 ECO
Issue Date :	SEPT 2001



TECHNICAL SPECIFICATION SHEET

MODEL : Gas 210-5 ECO	No of SECTIONS : 5
------------------------------	---------------------------

General Details

Fully condensing floor standing boiler supplied c/w electronic temperature and safety controls. Sectional cast aluminium heat exchanger. Powder coated, enamel steel casing forming sealed air box. Ultra low Nox, on / off, high / low or fully modulating (10-100%), pre - mix burner, gas/air ratio control for maximum efficiency and minimum emissions. Intelligent "abc[®]" boiler control system c/w numerical display providing operating and service parameters. Manufactured to ISO 9001. CE approved and supplied pre-assembled.

Output @ 80/60°C kW :	16 – 160	Efficiency % GCV :	> 93
Weight (dry) kgs :	170	Min Gas Pressure mbar :	17 NG
Overall Dim WxHxD mm :	1190x1290x450	Casing Colour BS RAL :	2002
Radiated Losses % :	< 0.1		

BURNER TYPE	Pre-mix	Low Nox Atmospheric	
Std Fuel Available :	Natural Gas	Gas Conn. size BSP :	1¼" M
Flame Protection :	Ionisation	Nox Level ppm @ 0% O₂ :	< 20
Noise Levels dB(A) :	< 57	Nox Level mg/kWh:	< 35
Ignition :	Electronic	Gas Consumption M³/h:	17.2

HYDRAULICS			
Water Content ltrs :	20.5	Resistance @ 11°C Δt.mb :	535
Nom Flow @ 11°C Δt l/s :	3.48	Resistance @ 20°C Δt. mb:	162
Min Return Temp °C	20	Min Flow Rate l/s :	None
Op Press min/max bars :	0.3 / 6 open vent	Std Operating Temp °C :	20 - 90
Op Press min/max bars :	0.8 / 6 pressurised	Max Operating Temp °C :	100
Test Press bar :	6	Boiler Connections BSP :	1¼" M
Condensate Conn. mm:	32 o/d	2nd Return Conn BSP :	1¼" M (option)

FLUE/ AIR INLET	Supplied as standard for conventional flue with optional kit for room sealed operation		
Residue Fan Duty Pa :	85	Air Inlet Connection mm :	150 i/d
Flue Diameter mm :	150 i/d	Flue Gas Mass kgs/hr :	274
Flue Gas Volume Cu M/h :	215		

ELECTRICAL			
Insulation Class IP :	20	Power Supply :	230.1.50
Start Current amps :	-	Run Current amps :	0.5
Fuse Rating Amps :	6	Power Consumption W :	12 /110
Modulating input V dc :	0-10	Controls Voltage V ac :	24 (max 4VA)

CONTROLS			
Standard :	High / Low	BMS Modulating (10-100%)	On / Off
	Manual o/ride	Hours Run Indication	
	High limit protection	Low water protection	
	Operating status indication		
Optional :	Volt free common alarm and boiler run indication		
	Safety interlock control pair (24V ac)		
	Rematic Optimising / Compensator (two wire communicating modulating)		
	DHW Time control	Using Rematic control	

Product Series **210-6 ECO****Issue Date :** **JULY 2002**

TECHNICAL SPECIFICATION SHEET

MODEL : Gas 210-6 ECO**No of SECTIONS : 6**

General Details

Fully condensing floor standing boiler supplied c/w electronic temperature and safety controls. Sectional cast aluminium heat exchanger. Powder coated, enamel steel casing forming sealed air box. Ultra low Nox, on / off, high / low or fully modulating (10-100%), pre - mix burner, gas/air ratio control for maximum efficiency and minimum emissions. Intelligent "abc[®]" boiler control system c/w numerical display providing operating and service parameters. Manufactured to ISO 9001. CE approved and supplied pre-assembled.

Output @ 80/60°C kW :	20 – 200	Efficiency % GCV :	> 93
Weight (dry) kgs :	200	Min Gas Pressure mbar :	17 NG
Overall Dim WxHxD mm :	1190x1290x450	Casing Colour BS RAL :	2002
Radiated Losses % :	< 0.1		

BURNER TYPE	Pre-mix	Low Nox Atmospheric
Std Fuel Available :	Natural Gas	Gas Conn. size BSP : 1¼" M
Flame Protection :	Ionisation	Nox Level ppm @ 0% O₂ : < 20
Noise Levels dB(A) @ 3M:	< 47	Nox Level mg/kWh: < 35
Ignition :	Electronic	Gas Consumption M³/h: 21.1

HYDRAULICS		
Water Content ltrs :	24	Resistance @ 11°C Δt.mb : 720
Nom Flow @ 11°C Δt l/s :	4.35	Resistance @ 20°C Δt. mb: 180
Min Return Temp °C	20	Min Flow Rate l/s : None
Op Press min/max bars :	0.3 / 6 open vent	Std Operating Temp °C : 20 – 90
Op Press min/max bars :	0.8 / 6 pressurised	Max Operating Temp °C : 100
Test Press bar :	6	Boiler Connections BSP : 1½" M
Condensate Conn. mm:	32 o/d plastic	2nd Return Conn BSP : 1¼" M (option)

FLUE/ AIR INLET	Supplied as standard for conventional flue with optional kit for room sealed operation		
Residue Fan Duty Pa :	140	Air Inlet Connection mm :	150 i/d
Flue Diameter mm :	150 i/d	Flue Gas Mass kgs/hr :	343
Flue Gas Volume Cu M/h :	-		

ELECTRICAL			
Insulation Class IP :	20	Power Supply :	230.1.50
Start Current amps :	-	Run Current amps :	0.5
Fuse Rating Amps :	6	Power Consumption W :	75/160
Modulating input V dc :	0-10	Controls Voltage V ac :	24 (max 4VA)

CONTROLS			
Standard :	High / Low	BMS Modulating (10-100%)	On / Off
	Manual o/ride	Hours Run Indication	
	High limit protection	Low water protection	
	Operating status indication		
Optional :	Volt free common alarm and boiler run indication		
	Safety interlock control pair (24V ac)		
	Rematic Optimising / Compensator (two wire communicating modulating)		
	DHW Time control	Using Rematic control	

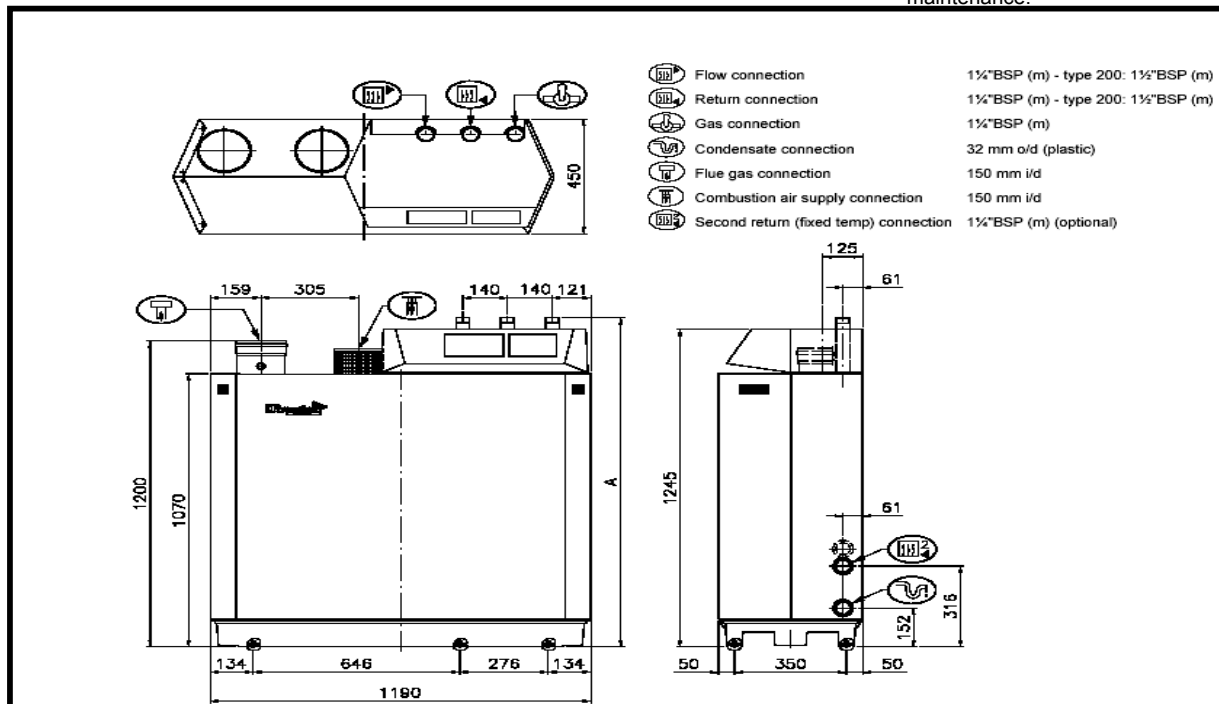
Remeha Gas 210 ECO

Advantages at a glance

- High efficiency: > 109% NCV at 40/30°C (98.2% GCV).
- Clean combustion: NOx less than 34 mg/kWh (20 ppm at O₂ = 0%)
- Modulation between 10% - 100% or high/low operation.
- Extremely quiet premix burners only 47 dBA (measured at 3 meters).
- Cast aluminium condensing heat exchanger.
- Fully assembled and pre-set delivery.
- Room sealed option.
- Very compact dimensions.
- No minimum return water temperatures.
- Low electrical consumption.
- Integral boiler control panel designed to accept a rematic® weather compensator.
- Newly developed gas/air ratio control (IMS) for optimal combustion.
- Advanced boiler control, Remeha's Comfort-Master, for reliable heat delivery.
- Bus connection RS-232 available for connection to BMS-system.
- Low weight
- Self closing air damper to reduce standing losses.

Remeha Gas 210 Eco

The Remeha Gas 210 ECO condensing boiler is a product with a high specification which places it above all other appliances in this field. The main features are its outstanding performance and suitability for applications that in the past could not be considered. Reduced dimensions and a new generation of intelligent advanced boiler control (abc) ensures easy installation and reliable supply of heat. The completely new design makes for easy servicing and maintenance.



Number of sections	Output		Input		Dimension ØD/ØD1 ¹⁾ mm	Weight net kg
	40/30°C kW	80/60°C kW	NCV kW	GCV kW		
3	90	80	84	91	150	130
4	135	120	126	136	150	150
5	180	160	168	182	150	170
6	214	200	204	227	150	200

Air supply connection. Only for the room sealed operation (specify when ordering)

Head Office

Remeha House,
Molly Millars Lane, Wokingham,
Berkshire RG41 2QP
Telephone (0118) 9783434
Fax (0118) 9786977
E-mail boilers@broag-remeha.com

Branch Office

Unit 3, Kestrel Close, Quarry Hill
Industrial Estate, Ilkeston
Derbyshire DE7 4RD
Telephone (0115) 9440778
Fax (0115) 9440588

