

Water Heating



SOLUTIONS



● HEATING ● STORING ● MOVING ● CONTROLLING WATER ●

INSTANT HOT WATER

PHE

PLATE HEAT EXCHANGERS



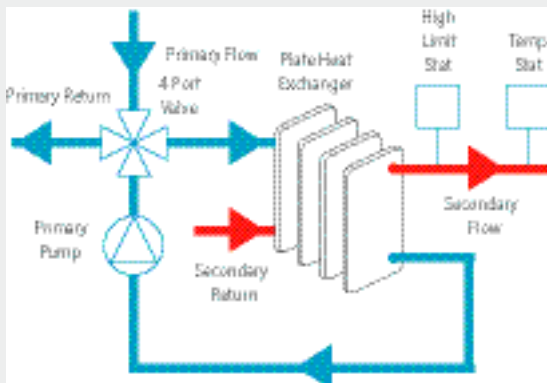
A range of compact, low maintenance, stainless steel plate heat exchangers

OUTPUTS FROM 0.25 L/Sec to 5.0 L/Sec

- Instant, continuous hot water.
- 99% efficient, minimum heat loss.
- Compact with small footprint.
- Stainless steel heat exchanger for long life.
- Design reduces scale by “Scrubbing Action”.
- Accurate temperature control to “avoid” Legionella risk.
- Pumps & controls all fitted for immediate connection.

PHE units are supplied ready for installation with primary pumps, mixing valve & controls all fitted. They are designed to raise secondary hot water supplies from 10°C to 60°C with primary water at a nominal 82°C.

The built in controls continuously monitor secondary temperature & modulate the primary water to maintain a continuous supply. All functions of the controller can be linked to external BEMS systems. PHE's can be matched to Buffer Tanks if insufficient boiler power is available. Secondary recirculation pumps can be matched & wired into the control panel.



HOT WATER STORAGE

HR

HIGH RECOVERY CALORIFIERS



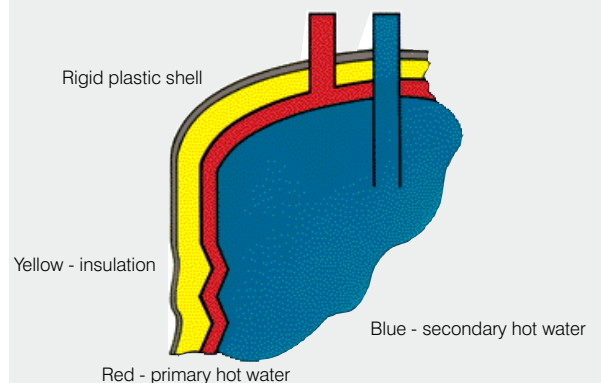
A range of high efficiency, fast recovery, indirect stainless steel calorifiers.

CONTINUOUS OUTPUTS 980 L/Hr to 4234 L/Hr
STORED CAPACITY 140 to 1,000 LITRES

- Simple installation.
- Rippled stainless steel inner tank for improved heat exchange and rapid recovery.
- E models include backup immersion heater.
- Low maintenance, scale shedding design.
- Fully insulated self coloured plastic outer casing, larger models are steel cased.
- 5 year guarantee on inner tank.
- Small footprint.
- Suitable for modular use.
- Fitted control panel supplied with thermostat and connection for pumps or motorised valves

HR Calorifiers are designed around two concentric tanks. An inner stainless steel tank is surrounded by a mild steel outer tank. Primary heating water circulates between the tanks to heat the domestic water in the inner tank. Rapid heat transfer is provided by the extended surface area of the corrugated inner tank, which has the added benefit of flexing to help prevent scale build-up on internal surface.

The tanks are enclosed in a self coloured plastic outer casing complete with 30mm of CFC free insulation fitted, together with an integral control panel. Larger models being steel cased.



INDEPENDENT HOT WATER

WH

INDIRECTLY FIRED WATER HEATERS



A range of independent, high efficiency, stainless steel, indirectly fired water heaters.

OUTPUTS FROM 37kW

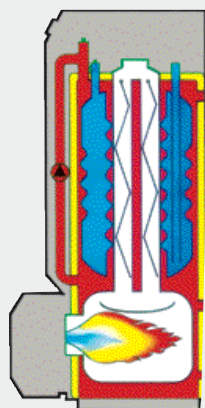
- Indirect fired operation from 'tank-in-tank' design giving rapid recovery times.
- Long life, scale shedding, stainless steel inner tanks with 5 year warranty.
- Built in programmer and controls.
- Choice of gas, oil or dual fuel burners including pre-mix & modulating burners.
- Small footprint with high outputs.
- Suitable for modular installation, or as a 'combi boiler'.

The water heaters are based on a stainless steel inner tank surrounded by an outer primary tank located above a combustion chamber.

Heated primary water transfers heat via the extended surface area of the corrugated inner tank. This unique design with its built in pumped circulation eliminates hot spots, reduces scale build-up and avoids stratification and associated Legionella problems.

The combustion chamber is water cooled for maximum heat recovery and a centrally located flue with stainless steel turbulators, ensures maximum efficiency.

The tanks and combustion chamber are enclosed within an enamelled steel casing lined with 30mm insulation.



HOT WATER STORAGE

BV

BUFFER VESSELS



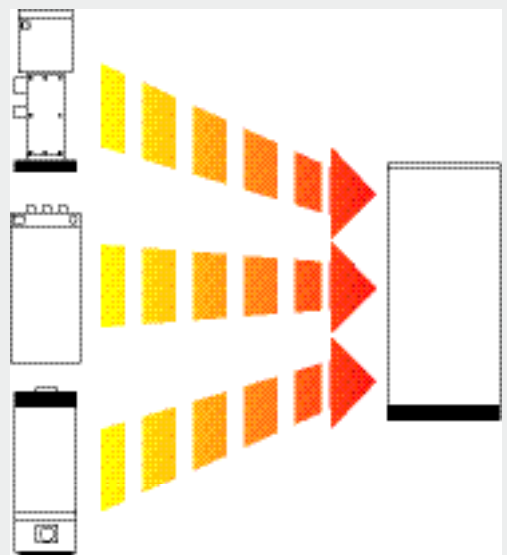
A range of free standing, stainless steel buffer tanks.

STORED CAPACITY 300L to 500L

- Stainless steel tank for long life with 5 year warranty.
- Choice of top or rear connections for ease of installation.
- Built in thermometer.
- Built in thermostat to control heat source.
- Small footprint.
- Suitable for modular applications.

The economically priced buffer vessels are designed to be used as a source of stored domestic hot water meeting peak demands within a building.

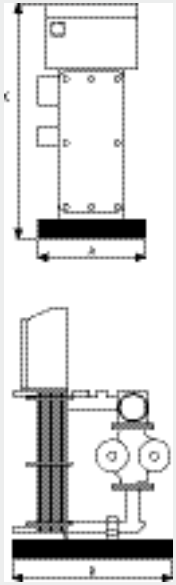
They can be connected to Beeston Plate Heat Exchangers, Calorifiers or Water Heaters where it is uneconomical to size the primary heat source to meet peak demands that may only last for a matter of minutes.



Water Heating Solutions

PHE

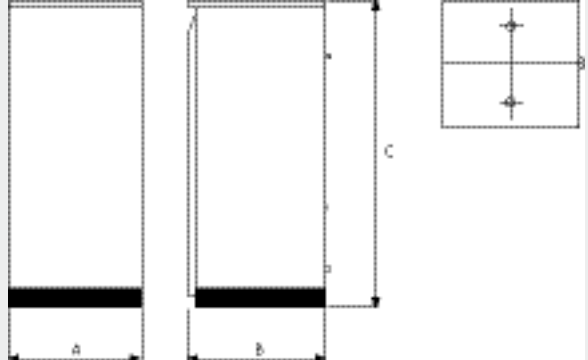
PLATE HEAT EXCHANGERS



Model	A	B	C	OUTPUT L/sec
25	336	818	1080	0.25
50	336	818	1080	0.50
75	336	818	1080	0.75
100	336	818	1080	1.00
150	336	818	1080	1.50
200	336	818	1080	2.00
250	336	818	1080	2.50
300	336	818	1080	3.00
350	336	818	1080	3.50
400	336	818	1080	4.00
450	336	818	1080	4.50
500	336	818	1080	5.00

BV

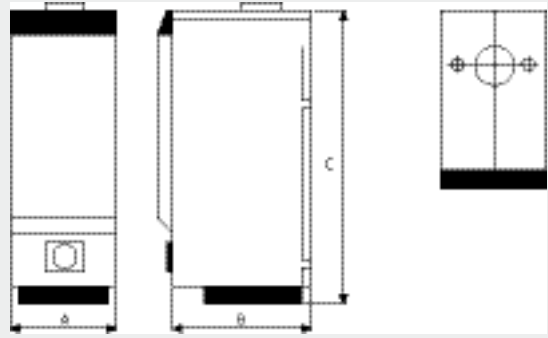
BUFFER VESSELS



Model	Width A	Depth B	Height C	Weight kg	Capacity litres
HRE 301	680	680	1860	89	281
HRE 501	750	750	2020	119	473

WH

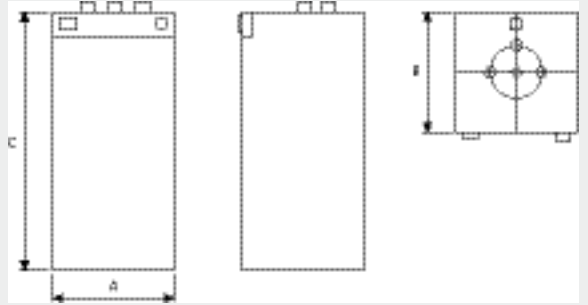
INDIRECTLY FIRED WATER HEATERS



Model	Width A	Depth B*	Height C	Heater output kW	Max Continuous Water Output L/h @40°C	Max Continuous Water Output L/h @60°C
30	540	538	1691	34.2	966	580
60	540	538	1698	63	1835	1106
70	680	678	1743	63	1835	1067
71	680	678	1743	18.4 - 63	1835	1067
100	680	678	2093	96.3	2776	1665
101	680	678	2093	20.2 - 99	2776	1665
150	1020	1020	2124	139	3989	2393
200	1020	1020	2124	178	5058	2865
201	1020	1020	2085	55 - 213	6117	2914

HR

HIGH RECOVERY CALORIFIERS



Model	Width A	Depth B	Height C	Max Continuous Water Output L/h @40°C	Max Continuous Water Output L/h @45°C	Max Continuous Water Output L/h @60°C
HRSLE130	Ø 555	-	960	658	564	320
HRSLE160	Ø 555	-	1160	890	763	465
HRSLE210	Ø 555	-	1435	1132	970	576
HRSLE240	Ø 555	-	1680	1527	1309	769
HRSL320	Ø 660	-	1550	2093	1794	1037
HRSL420	Ø 660	-	1975	2536	2058	1153
HR601	750	750	1865	2511	2152	1232
HRJ800	1020	1250	1915	2865	2458	1395
HRJ1000	1020	1650	2315	3210	2751	1552

Beeston Heating maintain a policy of continuous research and development, and reserve the right to alter specifications when necessary.



Beeston Heating Ltd. Derwentside Industrial Park, Derby Road, Belper, Derbyshire. DE56 1UX

Tel: 01773 828383 Fax: 01773 829091 email: info@beeston-heating.co.uk

Visit us at www.beeston-heating.co.uk

● HEATING ● STORING ● MOVING ● CONTROLLING WATER ●