

The Beeston Acer

60kW to 180kW

NEW PRODUCT



High efficiency wall mounted
condensing boilers



● HEATING ● STORING ● MOVING ● CONTROLLING WATER ●

Whatever boiler you need, whatever your application, Beeston can make your choice simple and your job easier.

Our extensive range, built to rigorous quality standards, has a boiler suitable for every application - and with more than 100 years of commercial heating experience we can help you choose the correct equipment for the job.

And although our product range is second to none, it doesn't stop there with pumps, calorifiers, water heaters and other plant room ancillaries being matched and supplied under the Beeston name.

We offer a design advisory service, site surveys, commissioning and a project management service where required.

Whatever we can do to help, we will. Every customer is assigned their own personal contact within the Beeston team. Your contact then has the responsibility of ensuring your project progresses smoothly from start to finish - and beyond.

Beeston is registered to ISO 9002 with an extensive range of products to suit every heating and hot water requirement.

An introduction to the new Beeston Acer

The Acer range of wall mounted condensing, pre mix, fully modulating boilers are suitable for all commercial applications, simple to install and maintain they are designed to reduce long term running costs for the user. A Class 5 low NOx product, with an all stainless steel heat exchanger it is environmentally friendly with extremely long life expectancy. All Acer boilers exceed the requirements of part L, today and in the future.

Features include:

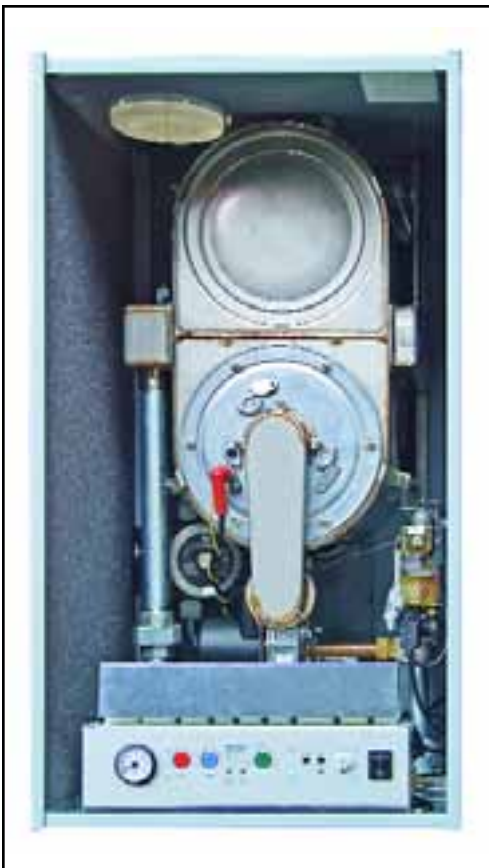
- Six model sizes 60 - 180 kW
- 109.5% efficiency
- Fully condensing
- Fully modulating
- Low NOx - Class 5 pre mix combustion
- ECA & Sedbuk A listed
- All stainless steel heat exchanger
- Built in pump
- Universal control compatibility
- Low cost horizontal and vertical flue systems
- Natural gas and LPG models available



Controls



- The control panel features the latest technology to simplify operation for the end user and provide password protected menus for the installer.
- Two sensors fitted in the flow and return connection give full modulation, allowing the boiler to anticipate maximum set temperatures and save fuel.
- Full weather compensation when outside sensor fitted.
- Fitted pressure gauge with digital temperature and boiler status display.
- Mains power isolator and on/off switch giving safe operation for service engineers.
- 0-10 volt BMS facility built in to controls.
- Control activates the integral pump for one minute every 24 hours to prevent seizure when the boiler is non-operational. A three minute pump over-run is also standard.
- Two stage frost protection for the boiler, step one - pump runs, step two boiler fires.
- External pump connection.
- On board cascade facility for up to eight boilers or zone control via three port valves.
- Automatic reset of high limit trip avoiding nuisance service calls.
- Stepless or programmable modulation steps of 0, 5, 10 or 20 minute blocks allowing maximum condensing time for maximum efficiency. During system warm up efficiency is always over 100%.
- Program for boiler only or boiler and calorifier with connection for primary pump or three port valve.
- Adjustable stoke line for matching the weather compensation to the building application.
- Automatic air venting cycle on initial start up of boiler
- Programmable fan speed to adjust boiler kW rating from maximum to minimum enabling the system load to be precisely matched for maximum efficiency.
- Diagnostic menu and memory of faults for ease of servicing. Real time programming via laptop and interface.



Heat Exchanger

- Made entirely from stainless steel, the heat exchanger tolerates variable water quality to ensure long and trouble-free operation and is backed by a five-year warranty.
- Sensors monitor and control all the boiler's parameters giving maximum efficiency at all times.
- Built in pump ensures correct flow rate across the boiler at varying loads.
- The stainless steel heat exchanger rated at six bar is of all welded construction with no gaskets or seals to perish and leak.
- The primary combustion chamber houses the easily removed pre mix burner with the upper chamber absorbing the latent heat from the flue gases ensuring maximum efficiency.
- Minimal maintenance, the pre mix burner does not require cleaning, any build up of dirt on the heat exchanger should be removed with water and a soft brush.
- Multiple attempt ignition until flame is established eliminating nuisance lock outs. Reliability for the contractor and end user.
- The fully modulating fan give a precise mix of air and gas to deliver constantly clean combustion at all loads.

Dimensions & Specifications

Appliance Model		60kW	80kW	100kW	120kW	150kW	180kW
Max Output (high)	kW	60	80	100	120	150	180
Min Output (low)	kW	15	20	25	30	36	45
Max Input (net)	kW	14-56	18-74	23-92	27-111	34-138	43-166
Max Input (gross)	kW	15-61	20-82	25-102	30-1123	38-154	48-184
Gas Group (N.G.)		G20 Natural Gas CAT 12H					
Firing Rate (high)	m ³ /h	6.5	8.5	11.8	12.8	16	20
Gas Connection Size	inch	3/4"	3/4"	3/4"	3/4"	1"	1"
Efficiency - Maximum	(100%)	109	109.5	109.5	109.5	109.5	109.5
Combustion (mg/kWh)	CO	<20	<20	<20	<20	<20	<20
Combustion (Low Fire)	CO ² %	9%	9%	9%	9%	9%	9%
NOX (RAL61) (Class 5)	mg/kWh	<15	<15	<15	<15	<15	<15
Electrical Supply		Single Phase 230v 50Hz, Fused at 2 Amps					
Height	mm	838	838	838	838	890	890
Width	mm	458	458	458	458	458	458
Depth	mm	490	490	490	490	670	670
Flue & Air Intake		As individual pipes connected to top of boiler					
Flue Connection Dia	mm	80	100	100	130	130	130
Air Intake Dia	mm	80	100	100	130	130	130
Flue & Air Intake		As concentric pipes connected to top of boiler					
Connection Dia	mm	80/125	100/150	100/150	N/A	N/A	N/A
Dry Weight	kg	46	73	78	83	92	101

Beeston Heating maintain a policy of continuous research and development, and reserve the right to alter specifications when necessary.



Beeston Heating Ltd. Derwentside Industrial Park, Derby Road, Belper, Derbyshire. DE56 1UX

Tel: 01773 828383 Fax: 01773 829091 email: info@beeston-heating.co.uk

Visit us at www.beeston-heating.co.uk

● HEATING ● STORING ● MOVING ● CONTROLLING WATER ●