



SPARE PARTS EXPLODED VIEW
GAS WALL BOILER

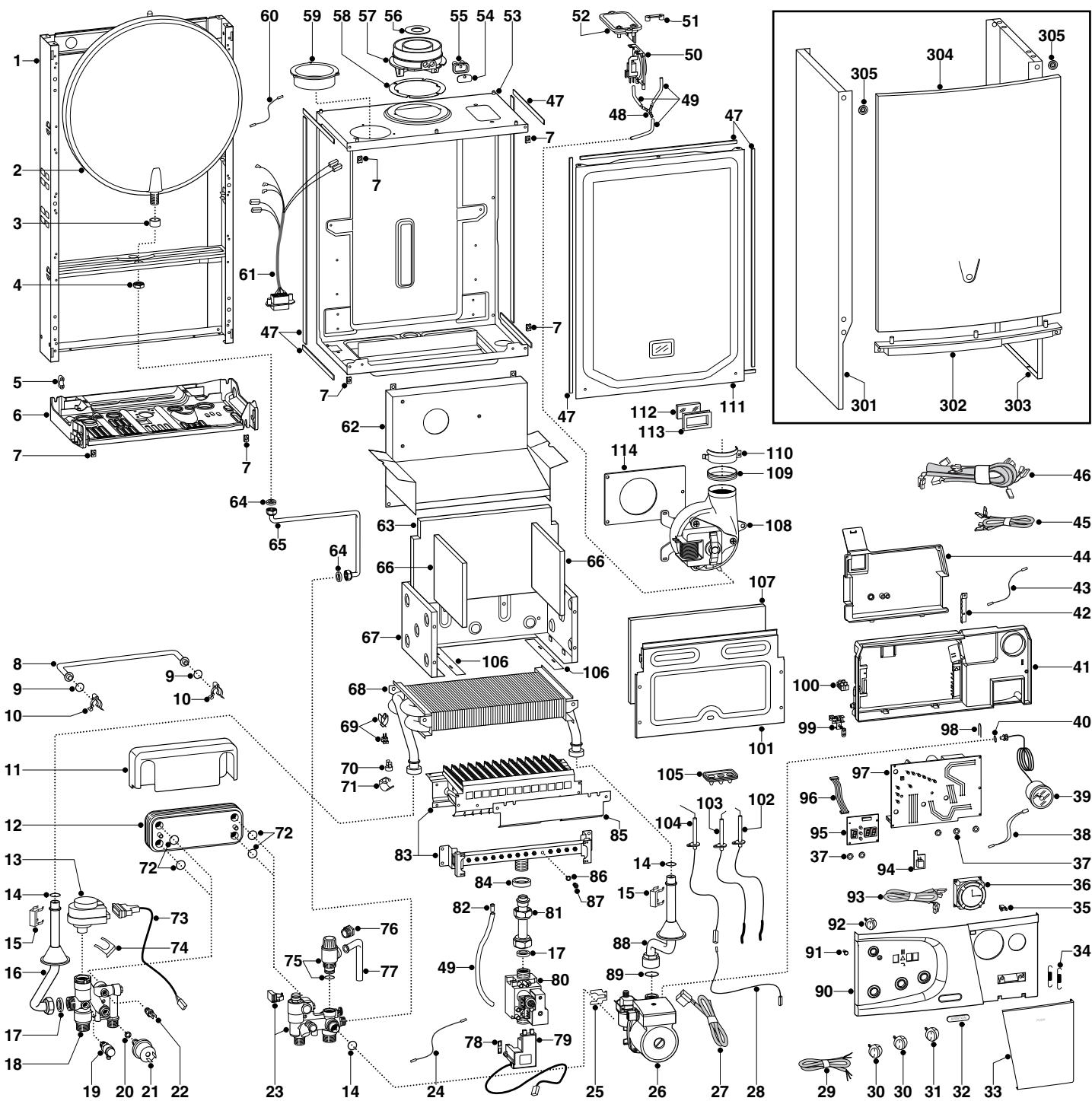
Models

MICROGENUS II 31 MFFI

Edition

Current from Serial No. 2320333300001 to Serial No. -----





ER2003210042101001

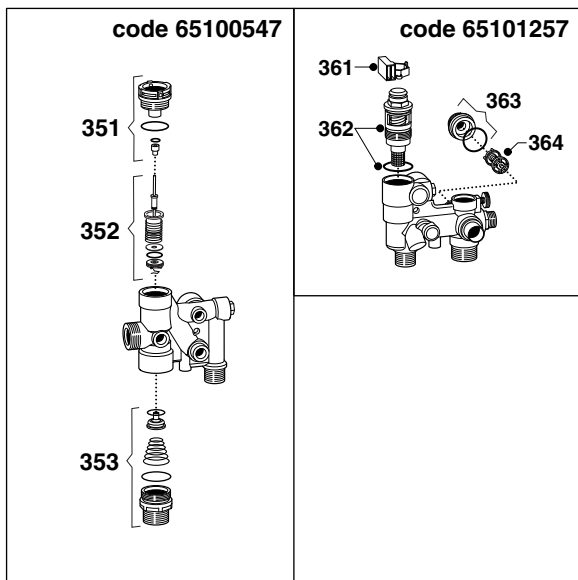
MODEL	CODE	SERIAL NO. VALIDITY	REF.
MICROGENUS II 31 MFFI (UK) NG	537527	2320333300001	A
MICROGENUS II 31 MFFI (UK) LPG	537528	2320333300001	B

PART.	CODE	DESCRIPTION	REF.	NOTE
1	-----	Frame		11
2	998616	Expansion vessel		
3	998776	Bush (expansion vessel)		
4	998581	3/8" lock nut		
5	571562	Cable clamp		
6	-----	Hydraulic group support		11
7	570717	Spring (fastening) (5 pcs)		
8	65100684	By-pass pipe		
9	998077	O-ring gasket (20 pcs)		
10	998064	Spring (by-pass pipe) (10 pcs)		
11	65100706	Cover insulation (secondary exchanger)		
12	998483	Secondary exchanger (p-type 30Kw)		
13	997147	Motor (3-Way valve)		
14	998424	O-ring (C=4 D=17,04) (10 pcs)		
15	61010609	Clips		
16	65100682	Delivery pipe		
17	573520	Gasket 3/4" (25 pcs)		
18	65100547	3-way-pressure gauge valve group		
19	573727	Drain valve		
20	569390	Gasket 1/4" (25 pcs)		
21	995903	Low water pressure switch		
22	998458	Temperature probe (D.H.W.)		
23	65101257	Return group		
24	65100704	Earth cable (valve)		
25	65100679	Clips		
26	65101258	Pump		
27	996116	Cable (P.C.B./fan)		
28	996119	Cable (detection)		
29	65100699	Cable (power supply)		
30	65100687	Knob (D.W.H./C.H.)		
31	65100690	Knob (On-Off)		
32	-----	Name badge		11
33	65100686	Control panel cover		
34	65100678	Spring		
35	65100676	Push (case door)		
36	999599	Clock		
37	569711	Nylon bush (10mm - 20 pcs)		
38	65100677	Safety wiring		
39	65100695	Pressure gauge		
40	998517	Gasket (20 pcs)		
41	-----	Control panel		11
42	-----	Cable clamp		11
43	65100705	Cable (earth)		
44	65100685	Control panel cover (rear)		
45	65100698	Low voltage wiring		
46	65101274	Cable (fan power supply)		
47	65100879	Seal (combustion chamber - 10x6)		
48	573327	"Y" piece (air pressure)		
49	573576	Compensation tube		
50	65100716	Air pressure switch		
51	573329	Pressure intake cover		
52	997203	Support plate (air pressure switch)		
53	-----	Sealed chamber		11
54	998565	Cover (flue test point)		
55	998636	Gasket (flue test point - 5 pcs)		
56	998087	Coaxial diaphragm (D.42)		
57	999561	Flue (exhaust manifold / header)		
58	998637	Gasket (flue collar - 5 pcs)		
59	998595	Plug (air intake)		
60	65101271	Cable (earth)		
61	995316	Cable (fan/air pressure switch)		
62	65101270	Flue hood		
63	65100531	Panel (insulation - rear)		
64	573521	Gasket 3/8" (25 pcs)		
65	65100681	Pipe (expansion vessel)		
66	992199	Panel (insulation - RH-LH Side)		

PART.	CODE	DESCRIPTION	REF.	NOTE
67	-----	Combustion chamber		11
68	6101136	Main exchanger		
69	990686	Temperature probe + clip (C.H. - T335D)		
70	996065	Thermostat (overheat- 103°C)		
71	65100521	Fixing spring (thermostat) (10 pcs)		
72	573825	O-Ring (secondary exchanger - 10 pcs)		
73	65100700	Cable (motor)		
74	997077	Fixing clip (motor)		
75	997088	Safety valve (3 bar)		
76	998567	Nut (pipe - safety valve)		
77	573176	Pipe (safety valve outlet)		
78	574279	Gasket (spark generator) (5 pcs)		
79	65100701	Spark generator		
80	997089	Gas valve (SIT 845 SIGMA)		
81	65100432	Gas pipe		
82	573325	Rivet		
83	65100718	Burner	A	
83	65100720	Burner	B	
84	569443	Silicone seal		
85	65101275	Inter ignition blade		
86	572138	Burner jet washer (20 pcs)		
87	65100772	Burner jet (D.1.35) (10 pcs)	A	
87	65100740	Burner jet (D.0.80) (10 pcs)	B	
88	65101272	Pipe (C.H. return)		
89	999325	O-Ring		
90	65101277	Control panel		
91	65100688	Button (reset)		
92	65100689	Knob		
93	65100297	Interconnecting cable		
94	65100778	Module kit (EEPROM CMP3)		
95	65100709	P.C.B. (CMP3-display)		
96	65100697	Display cable		
97	65100708	P.C.B. (CMP3 MI/FFI)		
98	571548	U-Clip		
99	-----	Terminal board		
100	571787	Terminal board (two pole)		
101	65100524	Panel (combustion chamber - front)		
102	65100693	Electrode (Ignition R.H.)		
103	65100694	Electrode (Ignition L.H.)		
104	65100692	Electrode (Detection)		
105	998147	Ignition electrode cable rubber		
106	-----	Plate (combustion chamber)		11
107	65100530	Panel (insulation - front)		
108	65100719	Fan		
109	65100707	Gasket (fan) (5 pcs)		
110	998566	Fixing clamp (fan)		
111	999151	Panel (combustion chamber - front)		
112	998075	Sight glass		
113	998076	Gasket (sight glass)		
114	999135	Panel (insulation - fan)		
301	998477	Case panel (L.H. side)		
302	998596	Insert case		
303	998476	Case panel (R.H. side)		
304	998607	Panel (front case)		
305	995305	Washer (20 pcs)		
401	65100771	Natural gas burner jet full kit (15 pcs)		12
402	65100739	Gas burner jet full kit (15 pcs)		12

NOTE	DESCRIPTION
11	Not supplied as a spare part
12	Not illustrated

ER2003210042101001



PART.	CODE	DESCRIPTION	REF.	NOTE
351	998974	Heating actuator bush		
352	998975	3-Way spring kit (D.H.W.)		
353	998718	3-Way spring kit (C.H.)		
361	65100540	Flow detection kit with magnet		
362	65100541	3-Way spring kit (D.H.W.)		
363	65100869	Union		
364	65100776	Central heating by-pass kit		