



## SPARE PARTS EXPLODED VIEW WALL-HUNG GAS BOILERS

Models

**microGENUS 23 MFFI**

**microGENUS 27 MFFI**

---

Edition 1

Current from Serial No:-

23 kW (NG)

23 kW (LPG)

27 kW (NG)

27 kW (LPG)

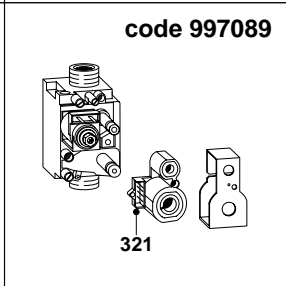
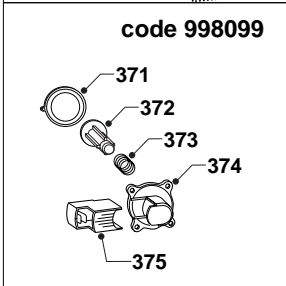
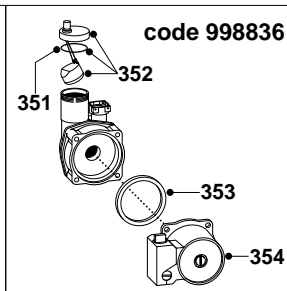
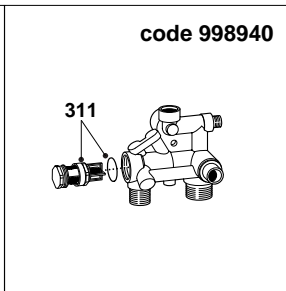
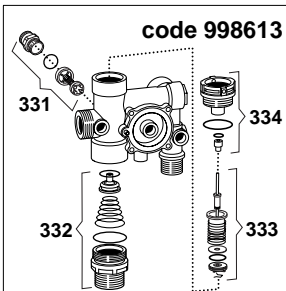
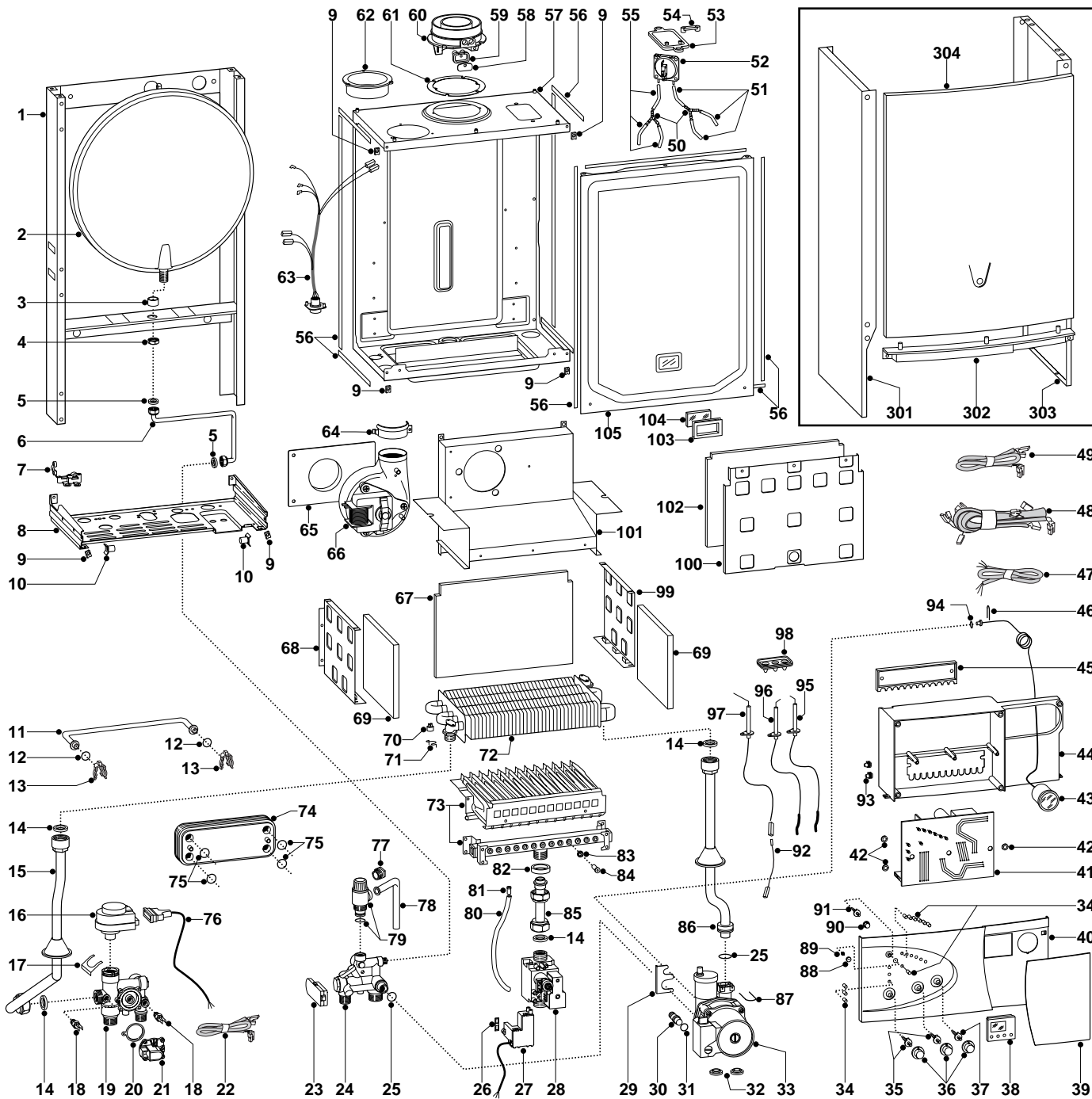
2319932200020 to 2320005600001

2319932300018 to 2320005600001

2319932500011 to 2320005600001

2319932400027 to 2320005600001





MODELS	CHARACTERISTICS	SERIAL NO: VALIDITY	REF.
MICROGENUS 23 MFFI	METHANE	9932200020	A
MICROGENUS 23 MFFI	LPG	9932300018	B
MICROGENUS 27 MFFI	METHANE	9932500011	C
MICROGENUS 27 MFFI	LPG	9932400027	D

<b>PART.</b>	<b>CODE</b>	<b>DESCRIPTION</b>	<b>REF.</b>	<b>NOTE</b>
1	-----	Frame		11
2	998616	Expansion vessel		
3	998776	Bush		
4	998581	3/8" lock nut		
5	573521	3/8" gasket		
6	998584	Pipe (expansion vessel)		
7	998580	Cable holder		
8	-----	Hydraulic group support		11
9	570717	Spring (fastening)		
10	998569	Pivot		
11	998589	By-pass pipe		
12	998077	O-ring gasket		
13	998064	Spring (by-pass pipe)		
14	573520	Gasket 3/4"		
15	998815	Pipe (flow)		
16	997147	Motor (3-Way valve)		
17	997077	Fixing clip (motor)		
18	569236	Temperature probe (C.H.W.)		
19	998613	Flow group		
20	571547	Diaphragm (main flow switch)		
21	998099	Main circuit flow switch		
22	998632	Cable (temperature probes)		
23	999075	D.H.W. flow switch		
24	998940	Return group		
25	998424	O-ring		
26	574279	Gasket		
27	998645	Spark generator		
28	997089	Gas valve (SIT 845 SIGMA)		
29	998606	Pump bracket		
30	998568	Pump plug		
31	997182	Gasket		
32	998452	Lock washer		
33	998836	Pump		
34	998570	L.E.D.		
35	998575	Spindle (temperature knob)		
36	998603	Control knob		
37	998572	Spindle (on/off knob)		
38	997207	Time clock		
39	998827	Front cover		
40	998824	Control panel		
41	998642	Printed circuit board (CMP1-FFI)		
42	569711	Nylon bush (10mm)		
43	998625	Pressure gauge		
44	-----	Control panel		11
45	-----	Cable holder cover		11
46	571548	Clip (Main Flow Switch)		
47	998861	Cable (power supply)		
48	998859	High voltage wiring		
49	998863	Low voltage wiring		
50	573327	"Y" piece (air pressure)		
51	571575	Silicone pipe (positive signal)		
52	571651	Air pressure switch	CD	
52	573989	Air pressure switch	AB	
53	997203	Support plate (Air pressure switch)		
54	573329	Pressure intake cover		
55	569662	Silicone pipe		
56	998516	10x6 adhesive gasket		
57	-----	Sealed chamber		11
58	998565	Cover (flue test point)		
59	998636	Gasket (flue test point)		
60	998602	Flue (exhaust manifold/header)		
61	998637	Flange gasket		
62	998595	Plug (air intake)		
63	998648	Sealed chamber wiring		
64	998566	Fixing clamp (fan)		

<b>PART.</b>	<b>CODE</b>	<b>DESCRIPTION</b>	<b>REF.</b>	<b>NOTE</b>
65	998601	Fixing plate (fan)	AB	
66	998621	Fan	AB	
66	998894	Fan	CD	
67	998640	Insulation panel (Rear)	AB	
67	998896	Insulation panel (Rear)	CD	
68	998600	Panel (combustion chamber - L.H. side)		
69	998639	Insulation panel (Side)		
70	997206	Thermostat (overheat)		
71	998583	Fixing spring (Limit thermostat)		
72	998620	Main exchanger	AB	
72	998893	Main exchanger	CD	
73	998618	Burner 12 ramp (natural gas)	A	
73	998669	Burner 12 ramp (LPG)	B	
73	998887	Burner 14 ramp (natural gas)	C	
73	998939	Burner 14 ramp (LPG)	D	
74	571646	Secondary exchanger (p-type 23kW)	AB	
74	573295	Secondary exchanger (p-type 27kW)	CD	
75	573825	O-Ring (secondary exchanger)		
76	998629	Cable (3-way valve motor)		
77	998567	Safety valve exhaust pipe ring nut		
78	573176	Pipe (safety valve outlet)		
79	573172	Safety valve (1/2" 3 bar)		
80	573576	Compensation tube		
81	573325	Rivet		
82	569443	Silicone seal		
83	572138	Burner jet washer		
84	998714	Burner jet (NG 1.30)	AC	
84	998715	Burner jet (LPG 0.77)	BD	
85	998729	Pipe (gas valve)		
86	998732	Pipe (C.H. return)		
87	997153	U-clip		
88	998604	Reset button		
89	998571	Reset button (insert)		
90	998605	Selector button (comfort)		
91	998579	Spindle (comfort)		
92	998862	Cable (detection electrode)		
93	569720	Blind grommet		
94	998517	Gasket		
95	998623	Electrode (Ignition R.H.)		
96	998622	Electrode (Ignition L.H.)		
97	998624	Detection electrode		
98	998147	Ignition electrode cable rubber		
99	998599	Panel (combustion chamber - R.H.side)		
100	998598	Panel (combustion chamber front)	AB	
100	998924	Panel (combustion chamber front)	CD	
101	998719	Flue hood	AB	
101	998925	Flue hood	CD	
102	998638	Insulation panel (Front)	AB	
102	998895	Insulation panel (Front)	CD	
103	998076	View window glass gasket		
104	998075	View window glass		
105	998610	Panel (front - sealed chamber)		
301	998477	Case panel (L.H. side)		
302	998596	Insert case		
303	998476	Case panel (R.H. side)		
304	998607	Panel (front case)		
311	998941	D.H.W. actuator kit		
321	997029	Operator coils (Sit Sigma)		
331	998490	Central heating by-pass kit		
332	998718	3-Way spring kit (C.H.)		
333	571447	3-Way spring kit		

<b>PART.</b>	<b>CODE</b>	<b>DESCRIPTION</b>	<b>REF.</b>	<b>NOTE</b>
334	998013	Heating actuator bush		
351	998644	O-ring (A.A.V.)		
352	998643	Auto Air Vent		
353	998738	Gasket (pump head)		
354	998961	Pump head		
371	571547	Diaphragm (main flow switch)		
372	571772	Magnet (main flow switch)		
373	571771	Spring (main flow switch)		
374	571770	Main flow switch top cap		
375	998172	Main flow switch reed system		
381	998716	Natural gas burner jet full kit		12
382	998717	LPG burner jet full kit		12

<b>NOTE</b>	<b>DESCRIPTION</b>
11	Not supplied as a spare part
12	Not illustrated