



SPARE PARTS EXPLODED VIEW  
WALL-HUNG GAS BOILERS

Models

**EuroCombi A23 MFFI**

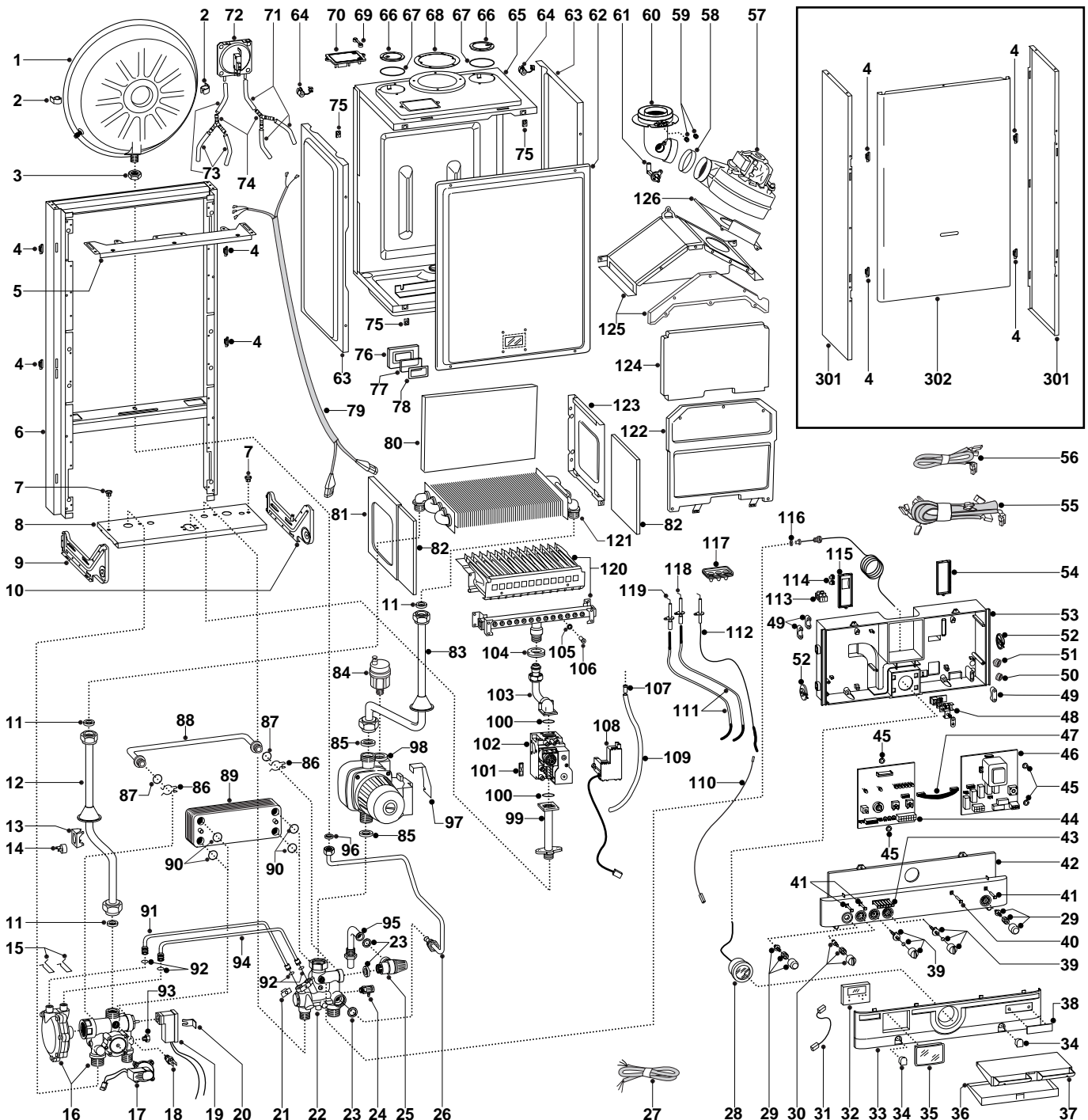
**EuroCombi A27 MFFI**

---

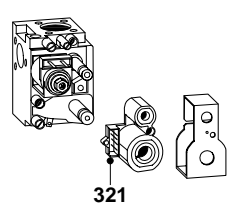
Edition 1

Current from Serial No:- ----- to 983610001

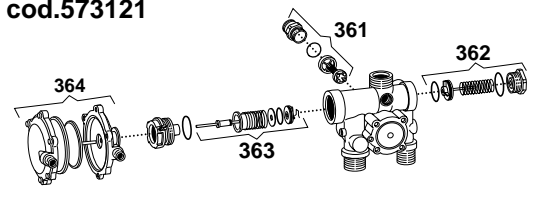




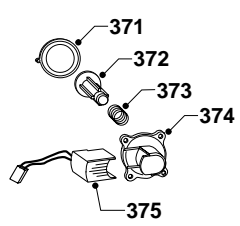
**cod. 574232**



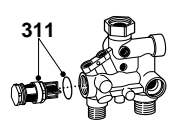
**cod.573121**



**cod. 573224**



**cod.573163**



| MODELS       | CHARACTERISTICS | SERIAL NO:<br>VALIDITY | REF. |
|--------------|-----------------|------------------------|------|
| A 23 MFFI UK | METHANE         | -----                  | A    |
| A 23 MFFI UK | LPG             | -----                  | B    |
| A 27 MFFI UK | METHANE         | -----                  | C    |
| A 27 MFFI UK | LPG             | -----                  | D    |

| PART | CODE   | DESCRIPTION                           | REF. | NOTE |
|------|--------|---------------------------------------|------|------|
| 1    | 573294 | Expansion vessel                      |      |      |
| 2    | 573310 | Expansion vessel insert               |      |      |
| 3    | 573244 | 3/8" lock nut                         |      |      |
| 4    | 574302 | Casing support bracket (Plastic)      |      |      |
| 5    | 572984 | Casing support bracket                |      |      |
| 6    |        | Frame                                 |      | 11   |
| 7    | 570772 | Cable holder                          |      |      |
| 8    |        | Hydraulic support                     |      | 11   |
| 9    | 574292 | Hydraulic support bracket (L.H.)      |      |      |
| 10   | 574291 | Hydraulic support bracket (R.H.)      |      |      |
| 11   | 573520 | Gasket 3/4"                           |      |      |
| 12   | 997199 | Pipe (Main exchanger/3-way-group)     | AB   |      |
| 12   | 997200 | Pipe (Main exchanger/3-way-group)     | CD   |      |
| 13   | 997224 | Overheat thermostat fixing spring     |      |      |
| 14   | 997206 | Overheat thermostat                   |      |      |
| 15   | 573809 | Spring (water venturi)                |      |      |
| 16   | 573121 | 3-way/main flow group                 |      |      |
| 17   | 573224 | Main flow switch                      |      |      |
| 18   | 569236 | Temp probe (C.H.W.)                   |      |      |
| 19   | 573340 | Microswitch for 3-way/main flow group |      |      |
| 20   | 573824 | Microswitch bracket (main flow)       |      |      |
| 21   | 571838 | Pipe fixing clip                      |      |      |
| 22   | 573163 | Return group                          |      |      |
| 23   | 573528 | Gasket 1/2"                           |      |      |
| 24   | 573727 | Manual vent cock                      |      |      |
| 25   | 573172 | Safety valve 3 bar 1/2"               |      |      |
| 26   | 573311 | Pipe (Expansion vessel )              |      |      |
| 27   | 573335 | Main power supply cable               |      |      |
| 28   | 571649 | Pressure gauge                        |      |      |
| 29   | 573304 | Release push/On-Off push-button kit   |      |      |
| 30   | 573306 | Summer/Winter selector Kit            |      |      |
| 31   | 997180 | Connection cable                      |      |      |
| 32   | 997207 | Time clock                            |      |      |
| 33   | 997144 | Control panel (bottom)                |      |      |
| 34   | 997138 | Inspection cover                      |      |      |
| 35   | 997142 | Cover (time clock protection)         |      |      |
| 36   | 997167 | Plastic cover door                    |      |      |
| 37   | 997168 | Warning plate lid inner frame         |      |      |
| 38   | 997139 | Name badge                            |      |      |
| 39   | 573305 | Regulation knob kit                   |      |      |
| 40   | 573370 | L.E.D. cover                          |      |      |
| 41   | 572913 | Power indicator L.E.D. lens           |      |      |
| 42   | 997145 | Control panel (top)                   |      |      |
| 43   | 572912 | Temperature L.E.D. bank lens          |      |      |
| 44   | 953730 | P.C.B. EX C MI/FFI                    |      |      |
| 45   | 569711 | Nylon bush 10mm                       |      |      |
| 46   | 952981 | P.C.B. EI A-MFFI                      |      |      |
| 47   | 952610 | P.C.B. cable                          |      |      |
| 48   |        | Terminal board                        |      | 11   |
| 49   | 571562 | Cable clamp                           |      |      |
| 50   | 569458 | Cable holders silicone D.2            |      |      |
| 51   | 573534 | Cable holder D.75                     |      |      |
| 52   | 571558 | Control panel rotor                   |      |      |
| 53   | 997204 | Control panel (rear)                  |      |      |
| 54   | 569713 | Cable holder cover (R.H.)             |      |      |
| 55   | 574272 | High voltage wiring                   |      |      |
| 56   | 574271 | Low voltage wiring                    |      |      |
| 57   | 572989 | Fan                                   | AB   |      |
| 57   | 572990 | Fan                                   | CD   |      |
| 58   | 573343 | Fan inlet gasket                      |      |      |
| 59   | 573326 | Flue intake plug                      |      |      |
| 60   | 573333 | Flue exhaust manifold / header        |      |      |
| 61   | 573314 | Venturi (exhaust manifold/header)     |      |      |

| PART | CODE   | DESCRIPTION                                     | REF. | NOTE |
|------|--------|---|------|------|
| 62   | 573344 | Sealed chamber front panel                      |      |      |
| 63   |        | Sealed chamber side panel                       |      | 11   |
| 64   | 570561 | Fan power supply cord clamp                     |      |      |
| 65   |        | Sealed chamber box-shaped casing                |      | 11   |
| 66   | 573330 | Air return cover                                |      |      |
| 67   | 573865 | Flue manifold gasket                            |      |      |
| 68   | 573337 | Flue manifold gasket                            |      |      |
| 69   | 573329 | Pressure gauge pressure intake cover            |      |      |
| 70   | 573332 | Air pressure switch support plate               |      |      |
| 71   | 571575 | Silicone pipe (positive signal)                 |      |      |
| 72   | 571651 | Air pressure switch                             | AB   |      |
| 72   | 571652 | Air pressure switch                             | CD   |      |
| 73   | 569662 | Silicone pipe                                   |      |      |
| 74   | 573327 | Y-piece (air pressure)                          |      |      |
| 75   | 570717 | Fastening spring                                |      |      |
| 76   | 573566 | View window holder                              |      |      |
| 77   | 573567 | View window glass                               |      |      |
| 78   | 569442 | View window seal                                |      |      |
| 79   | 573017 | Cable (fan/air pressure switch)                 |      |      |
| 80   | 573723 | Back insulation panel                           | AB   |      |
| 80   | 573724 | Back insulation panel                           | CD   |      |
| 81   | 573243 | Combustion chamber panel (L.H.)                 |      |      |
| 82   | 573720 | Side insulation panel                           |      |      |
| 83   | 573313 | Pipe (main exchanger/pump)                      |      |      |
| 84   | 564254 | Automatic air release valve                     |      |      |
| 85   | 569387 | Gasket 1"                                       |      |      |
| 86   | 573808 | By-pass pipe spring                             |      |      |
| 87   | 571449 | O-ring  |      |      |
| 88   | 573245 | By-pass pipe                                    |      |      |
| 89   | 571646 | Secondary exchanger (plate-type) exchanger 23kW | AB   |      |
| 89   | 573295 | Secondary exchanger (plate-type) exchanger 27kW | CD   |      |
| 90   | 573825 | O-ring (secondary exchanger)                    |      |      |
| 91   | 573086 | Pipe (main flow switch positive signal )        |      |      |
| 92   | 571807 | O-ring (20-18)                                  |      |      |
| 93   | 570615 | Brass cap 1/8"                                  |      |      |
| 94   | 573087 | Pipe (main flow switch negative signal )        |      |      |
| 95   | 573176 | Safety valve outlet pipe                        |      |      |
| 96   | 573521 | Gasket 3/8"                                     |      |      |
| 97   | 997146 | Circulator connector bracket                    |      |      |
| 98   | 997150 | Pump  | AB   |      |
| 98   | 997151 | Pump  | CD   |      |
| 99   | 997202 | Pipe (gas inlet)                                |      |      |
| 100  | 571965 | O-ring (13)                                     |      |      |
| 101  | 574279 | Gasket  |      |      |
| 102  | 574232 | Gas valve (sit sigma)                           |      |      |
| 103  | 574194 | Pipe (gas outlet)                               |      |      |
| 104  | 569443 | Silicone seal                                   |      |      |
| 105  | 572138 | Burner jet washer                               |      |      |
| 106  | 570248 | Burner jet 1.25mm                               | AC   |      |
| 106  | 570251 | Burner jet 0.72mm                               | BD   |      |
| 107  | 573325 | Rivet   |      |      |
| 108  | 574233 | Spark generator                                 |      |      |
| 109  | 573576 | Compensation tube                               |      |      |
| 110  | 571657 | Cable (detection electrode/P.C.B.)              |      |      |
| 111  | 571662 | Ignition electrode cable                        |      |      |
| 112  | 573441 | Detection electrode                             |      |      |
| 113  | 571787 | Terminal block                                  |      |      |
| 114  | 569720 | Blind grommet                                   |      |      |
| 115  | 569714 | Cable holder cover (L.H.)                       |      |      |
| 116  | 569390 | Gasket 1/4"                                     |      |      |
| 117  | 573336 | Ignition electrode cable rubber                 |      |      |
| 118  | 569560 | Ignition electrode (R.H.)                       |      |      |
| 119  | 569561 | Ignition electrode (L.H.)                       |      |      |

| <b>PART</b> | <b>CODE</b> | <b>DESCRIPTION</b>                     | <b>REF.</b> | <b>NOTE</b> |
|-------------|-------------|--|-------------|-------------|
| 120         | 572271      | Main burner                            | A           |             |
| 120         | 572277      | Main burner                            | B           |             |
| 120         | 573347      | Main burner                            | C           |             |
| 120         | 572372      | Main burner                            | D           |             |
| 121         | 572749      | Main exchanger                         | AB          |             |
| 121         | 572835      | Main exchanger                         | CD          |             |
| 122         | 572647      | Front combustion chamber panel         | AB          |             |
| 122         | 572648      | Front combustion chamber panel         | CD          |             |
| 123         | 573242      | Combustion chamber panel (R.H.)        |             |             |
| 124         | 573721      | Front insulation panel                 | AB          |             |
| 124         | 573722      | Front insulation panel                 | CD          |             |
| 125         | 573248      | Sealed chamber flue hood               | AB          |             |
| 125         | 573249      | Sealed chamber flue hood               | CD          |             |
| 126         | 573047      | Fan fixing plate                       | AB          |             |
| 126         | 573465      | Fan fixing plate                       | CD          |             |
|             |             |  |             |             |
| 301         | 572696      | Casing panel (side)                    |             |             |
| 302         | 997052      | Casing panel (front)                   |             |             |
|             |             |  |             |             |
| 311         | 571444      | D.H.W. actuator kit                    |             |             |
|             |             |  |             |             |
| 321         | 997029      | Sit Sigma gas valve operator coils     |             |             |
|             |             |  |             |             |
| 361         | 571443      | Heating by-pass kit                    |             |             |
| 362         | 571442      | D.H.W. pressure switch kit             |             |             |
| 363         | 571447      | 3-way spring kit                       |             |             |
| 364         | 571446      | D.H.W. diaphragm valve                 |             |             |
|             |             |  |             |             |
| 371         | 571547      | Main flow switch diaphragm             |             |             |
| 372         | 571772      | Main flow switch magnet                |             |             |
| 373         | 571771      | Main flow switch spring                |             |             |
| 374         | 571770      | Main flow switch top cap               |             |             |
| 375         | 573138      | Main flow switch reed system           |             |             |
|             |             |  |             |             |
| 381         | 569281      | Burner jet 1.25 full kit (Natural gas) |             | 12          |
| 382         | 569282      | Burner jet 0.72 full kit (LPG)         |             | 12          |